

ACO Qmax

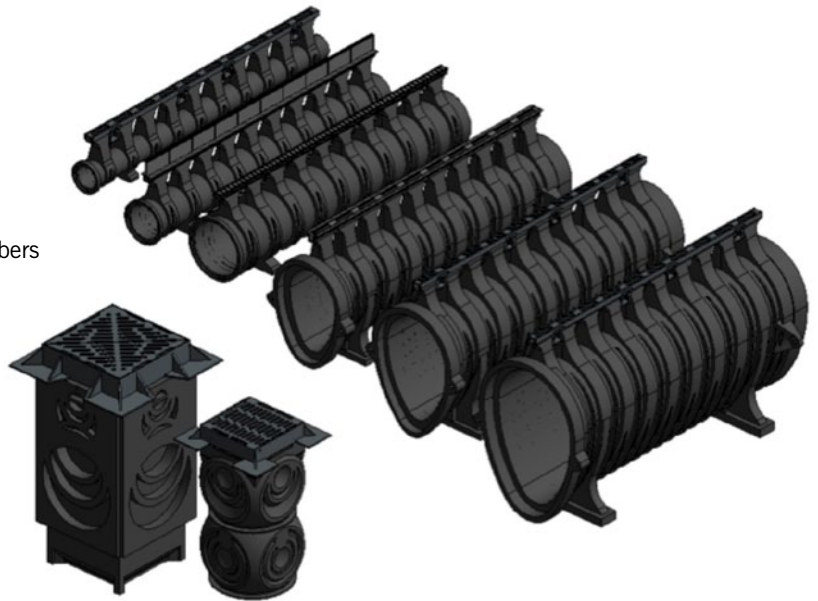
High capacity slot drainage system

User Guide for Autodesk Revit files

The ACO Qmax Range

ACO Qmax is divided into 8 individual Revit families.

- Qmax 150 system and components
- Qmax 225 system and components
- Qmax 350 system and components
- Qmax 550 system and components
- Qmax 700 system and components
- Qmax 900 system and components
- Qmax 225 and 350 access, outlet/inlet and silt chambers
- Qmax 550, 700 & 900 access and silt chambers

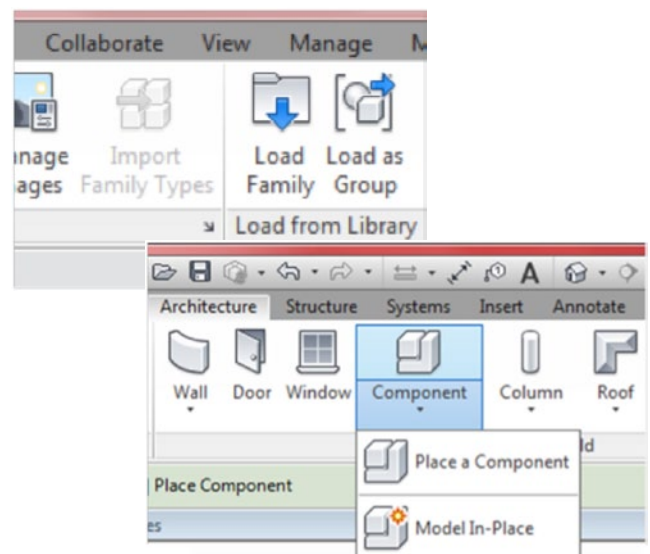


Loading ACO Qmax into your project

Each system is modelled as a generic family that can simply be loaded into your project.

1. Download the relevant ACO Qmax file and save it to a suitable location
2. Open your project and navigate to an appropriate view
3. Navigate to the "Insert" icon on the Revit ribbon and click "Load Family"
4. Select the Qmax Revit file you saved earlier
5. The file can now be placed into your project. Navigate to the "Architecture/Component" icons on the Revit ribbon and click "Place a Component"

Note that all of the Qmax files are "floor" based items.



ACO Water Management: Civils + Infrastructure

A division of ACO Technologies plc
ACO Business Park, Hitchin Road, Shefford,
Bedfordshire, SG17 5TE

Tel: 01462 816666
Fax: 01462 815895

e-mail: technical@aco.co.uk
website: www.aco.co.uk

Using the channel system and options

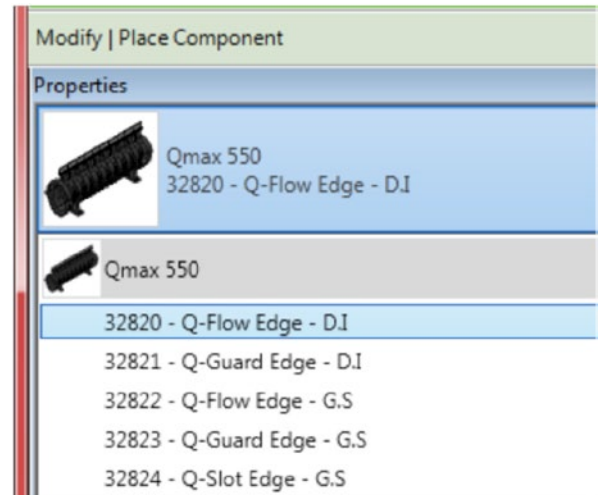
ACO Qmax channel system and options

Step 1: Select the channel edge rail option

ACO Qmax edge rails are available in two material finishes and five edge rail designs:

- Q-Flow ductile iron
- Q- Guard ductile iron
- Q-Flow galvanised steel
- Q-Guard galvanised steel
- Q-Slot galvanised steel

Select your option from the “Properties” drop down menu.



Step 2: Select the accessories

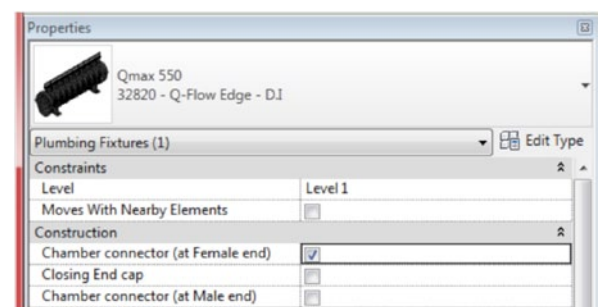
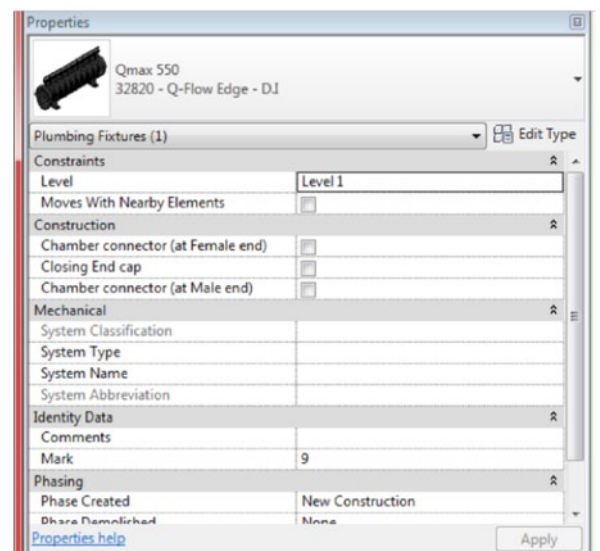
Additional features have been built into the Qmax files that allow simple on/off selection of the accessories. Accessories include:

- End Caps
- Step Connectors
- Chamber Connectors

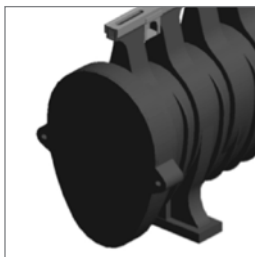
By default the accessories are turned off and will not be included in the project. Turn on to be included in the project.

To choose the accessories, position the component within the project and then select it. Once selected, the “Properties” box will appear on the left hand side of the screen for the component.

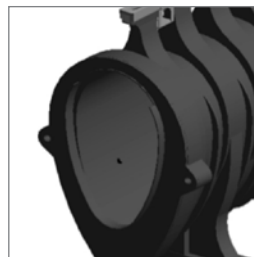
Options can be made from here.



Chamber Connector



End Cap



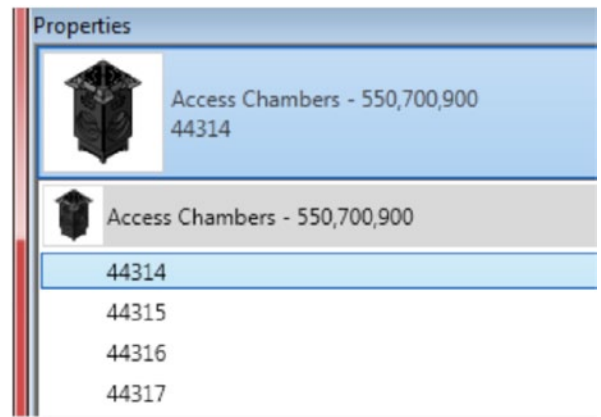
Step Connector



ACO Qmax access chambers

The ACO Qmax access chamber are available in a number of different configurations and cover options. These include access, outlet/inlet and silt chambers and Class D 400 & F 900 solid and slotted covers to suit your specific requirements. Each chamber file provides a list of the options available.

Load the relevant family and then select the required Qmax Access Chamber component from the “Properties” drop down menu.

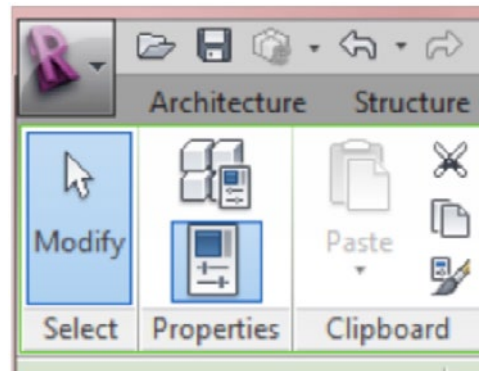


Type properties

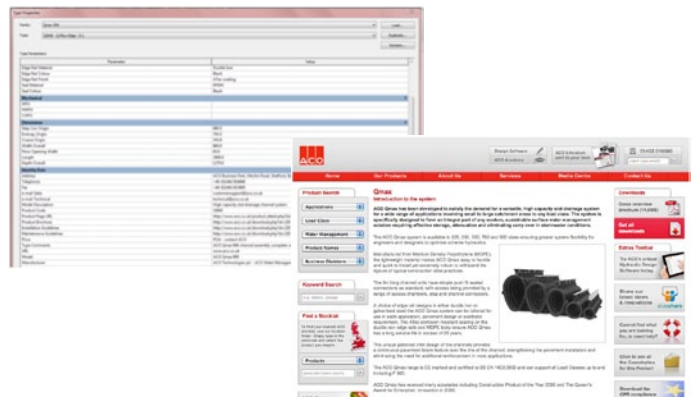
The ACO Qmax file has a wealth of useful information embedded within it, including installation and maintenance details.

This information, along with much more is either stored within the files or available through hyperlinks within the components type properties.

1. To access the information within the component, simply select the component and then click the “Type Properties” icon on the Revit ribbon at the top of the screen



2. The “Type Properties” information sheet will now be displayed on the screen. Simply scroll up and down the sheet to find the information you require.
3. The information within the “Type Properties” is stored as “Shared Parameters” so can easily be used when creating a schedule for example.



Material library

The ACO Qmax file contains materials that are already pre-loaded into the components. When loading the ACO Qmax file into your project the pre-loaded materials will automatically transfer through.

Other notes

You can add the ACO Qmax systems to your company template file. They will then be available without the need to load them when starting a new project. The ACO Qmax systems have been created in Revit 2013.