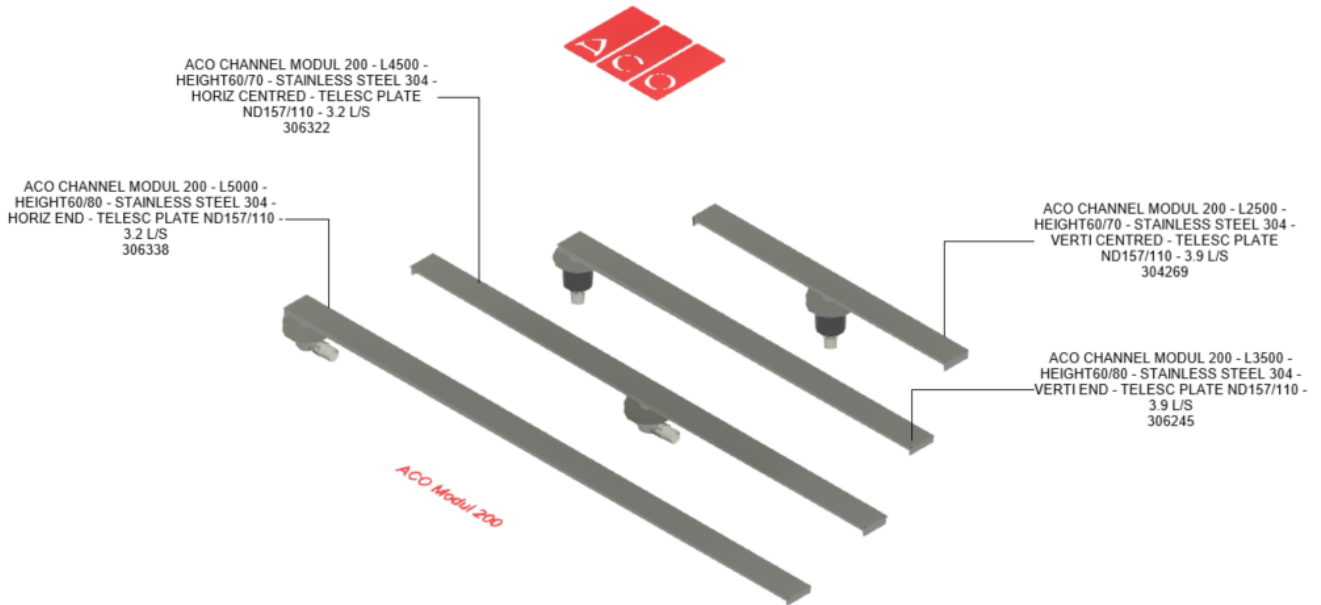


ACO Modul 200

User Guide for Autodesk Revit files



Introduction and overview:

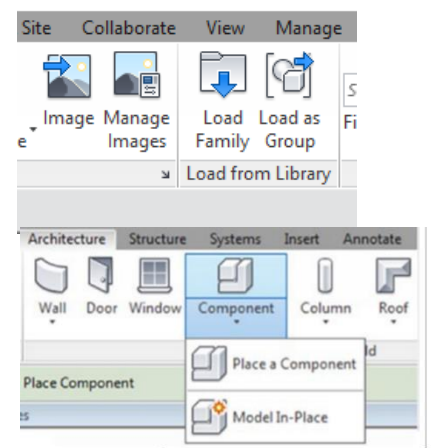
1. There are one family in the model incorporating Modul 200 and associate accessories.
2. Families are assigned to Omni class 23.70.50.21.24: wastewater drains.
3. User can select each family from the type selector in the project environment

File characteristics and contents:

1. File designed to be user friendly.
2. File is tagged with manufacture's name, code article and other relevant information.
3. Bill of materials (schedules) can also be accessed from the project environment.

Loading ACO Modul 200 into the project:

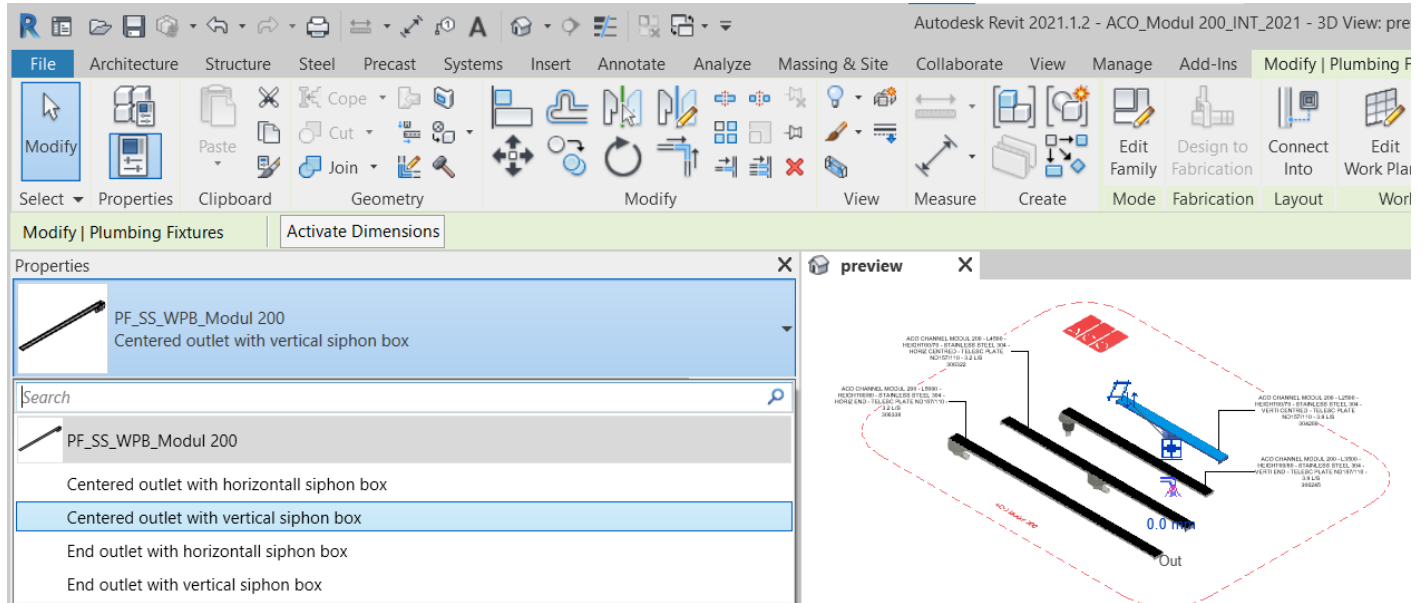
1. Download PF_SS_WPB_Modul 200.rfa file and save it to a suitable location.
2. Load the families into the project file
3. Navigate to the "Insert" icon on the Revit ribbon and click "Load Family"
4. The file can now be placed into your project. Navigate to the "Architecture/Component" icons on the Revit ribbon and click "Place a Component"



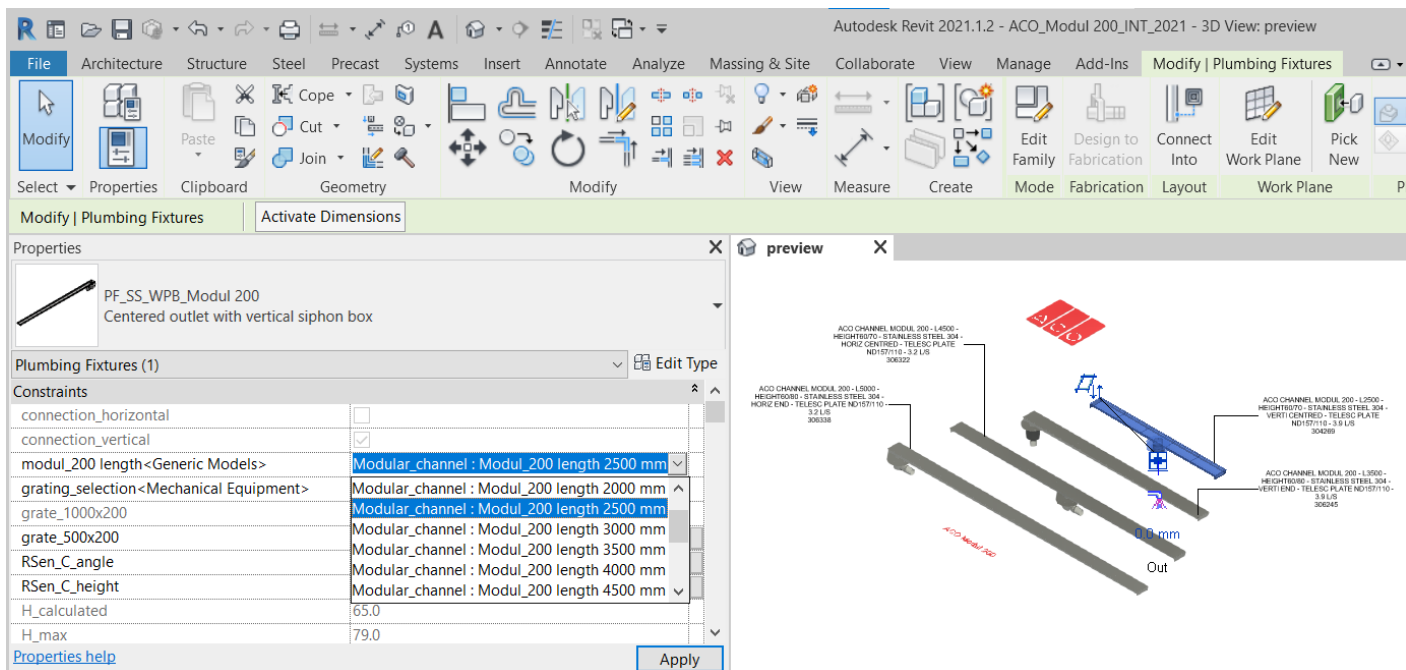
Placing of families

- Click on the model – At properties tool bar, it will display family name as PF_SS_WPB_Modul 200 and family types are:
 - Centered outlet with vertical siphon box
 - End outlet with vertical siphon box
 - Centered outlet with horizontal siphon box
 - End outlet with horizontal siphon box

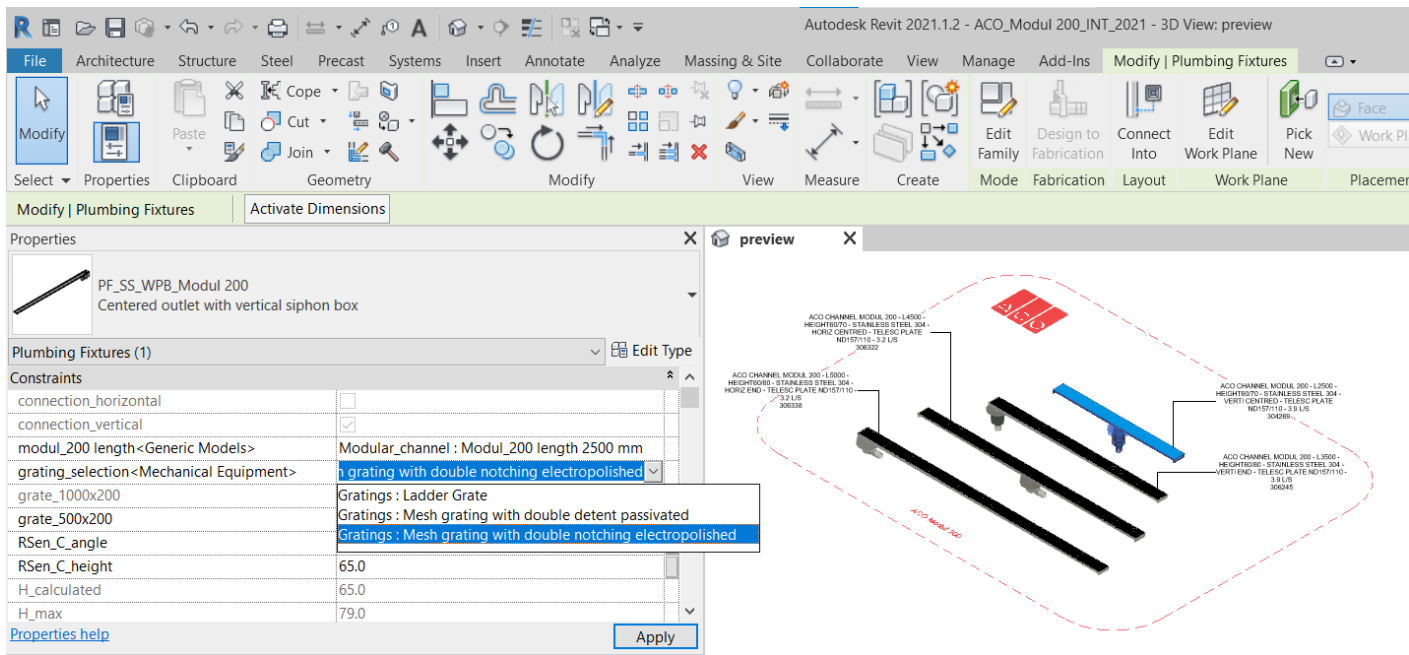
User can select any type range of product from dropdown menu.



- Selection of length: Provided option for selecting different length of modular channel. In drop down menu, user can select the different length available.



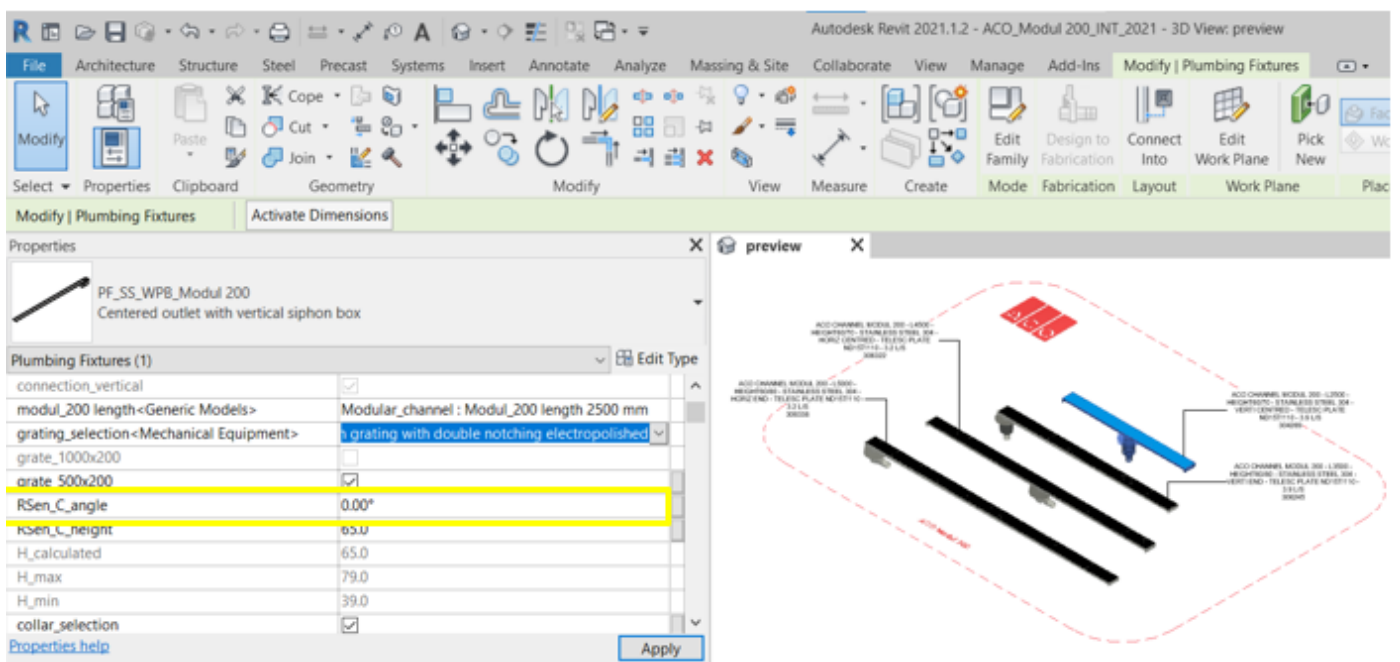
3. Selection of Grate: Provided option for selecting different types of grating. In drop down menu, user can select their required grating.



User can select the grating size. There are two sizes: 1000x200 and 500x200. By default, it will be in 1000x200 size if user want to go with 500x200, there is a parameter with name grate_500x200. If they tick that option then automatically 1000x200 size will be disabled and it will take the size of 500x200.

grate_1000x200	<input type="checkbox"/>
grate_500x200	<input checked="" type="checkbox"/>

4. Horizontal outlet rotation angle: In horizontal position, user have flexibility to rotate 360° by entering the value in RSen_C_angle.



5. Gully height adjustment: User have option to adjust the gully height by entering the value between H_min to H_max in Rsen_C_height dialog box.

RSen_C_height	65.0
H_calculated	65.0
H_max	79.0
H_min	39.0

6. Selection of raising piece: Provided tick option for selecting raising piece, once raising_piece is selected then user as to decide to select with flange or without flange by selecting tick option and user can enter their required raising piece height so it can vary within maximum and minimum value.

raising_piece_selection	<input checked="" type="checkbox"/>	
raising_piece_with_flange	<input type="checkbox"/>	
raising_piece_without_flange	<input checked="" type="checkbox"/>	
raising_piece_height	0.0	
raising_piece_H_calculated	39.0	
raising_H_max	79.0	
raising_H_min	39.0	

7. Selection of accessories: Provided tick option for selecting related accessories like, PVC collar, protection kit for outlet, fire protection kit and sealing recovery plate.

collar_selection	<input checked="" type="checkbox"/>
protection_kit	<input checked="" type="checkbox"/>
raising_piece_selection	<input checked="" type="checkbox"/>
raising_piece_with_flange	<input checked="" type="checkbox"/>
raising_piece_without_flange	<input type="checkbox"/>
fire_protection_kit	<input checked="" type="checkbox"/>

8. Warning :

If Horizontal outlet has been selected and user selected fire protection kit it will showcase the warning.

Plumbing Fixtures (1)		▼	🔍 Edit Typ
H_calculated	57.0		
H_max	91.0		
H_min	57.0		
connection_horizontal	<input checked="" type="checkbox"/>		
connection_vertical	<input type="checkbox"/>		
centered_outlet	<input type="checkbox"/>		
end_outlet	<input checked="" type="checkbox"/>		
collar_selection	<input checked="" type="checkbox"/>		
protection_kit	<input type="checkbox"/>		
raising_piece_selection	<input type="checkbox"/>		
raising_piece_with_flange	<input type="checkbox"/>		
raising_piece_without_flange	<input checked="" type="checkbox"/>		
fire_protection_kit	<input checked="" type="checkbox"/>		
WARNING	fire protection kit not available for horizontal outlet		

Material Library:


The ACO Modul 200 files contain materials that are already pre-loaded into the components. When loading the ACO Modul 200 files into your project the pre-loaded materials will automatically transfer through.

Schedules and quantities:

Information such as article number, GTIN data, weight, installation guidelines within the parameters is stored as “shared Parameters” so can easily appear when creating a schedule and quantities in the project environment.

preview

ACO Modul 200 X



<ACO Modul 200>

A	B	C	D	E	F	
Number	Definition	Article Number	GTIN	Weight	Technical Information	
2	ACO FIRE RESISTANT KIT / THERMAL INSULATION WITH FAT AND FAT HOLDER / FOR GULLY 157-110	416933	8590830253247	3.50 kg	https://www.aco.fr/	ACO FIRE RESISTANT KIT / T
15	ACO MESH GRATING 200X500 M19X19 - ELECTROPOLISHED NONSLIP STAINLESS STEEL	304362		2.90 kg	https://www.aco.fr/	ACO MESH GRATING 200X50
8	ACO MESH GRATING 200X1000 M19X19 - ELECTROPOLISHED NONSLIP STAINLESS STEEL	304361		5.60 kg	https://www.aco.fr/	ACO MESH GRATING 200X10
1	ACO CHANNEL MODUL 200 - L2500 - HEIGHT60/70 - STAINLESS STEEL 304 - VERTI CENTRED - TELESC PLATE ND157/110 - 3.9 L/S	304269	-	21.68 kg	https://www.aco.fr/	ACO CHANNEL MODUL 200 -
1	ACO CHANNEL MODUL 200 - L3500 - HEIGHT60/80 - STAINLESS STEEL 304 - VERTI END - TELESC PLATE ND157/110 - 3.9 L/S	306245	-	26.81 kg	https://www.aco.fr/	ACO CHANNEL MODUL 200 -
1	ACO CHANNEL MODUL 200 - L4500 - HEIGHT60/70 - STAINLESS STEEL 304 - HORIZ CENTRED - TELESC PLATE ND157/110 - 3.2 L/S	306322	-	33.70 kg	https://www.aco.fr/	ACO CHANNEL MODUL 200 -
1	ACO CHANNEL MODUL 200 - L5000 - HEIGHT60/80 - STAINLESS STEEL 304 - HORIZ END - TELESC PLATE ND157/110 - 3.2 L/S	306338	-	36.69 kg	https://www.aco.fr/	ACO CHANNEL MODUL 200 -
2	ACO PIPE PROTECTION SYSTEM ACO PROTEC / STAINLESS STEEL / FOR OUTLET DN110	304372	--	1.20 kg	https://www.aco.fr/	ACO PIPE PROTECTION SYS
2	ACO PIPE PROTECTION SYSTEM ACO PROTEC / STAINLESS STEEL 304 - FOR OUTLET BOX 157 - HORIZONTAL	307634	--	0.37 kg	https://www.aco.fr/	ACO PIPE PROTECTION SYS
4	ACO COUPLING / STAINLESS STEEL / DN110 TO PVC DN100 / FOR PVC BONDING	304314	--	0.16 kg	https://www.aco.fr/	ACO COUPLING / STAINLESS
4	ACO RAISING PIECES STAINLESS STEEL - FOR GULLY BODY DIAMETER 157 / WITH PLATE DIAMETER 358	408206	8590830107700	1.90 kg	https://www.aco.fr/	ACO RAISING PIECES STAIN