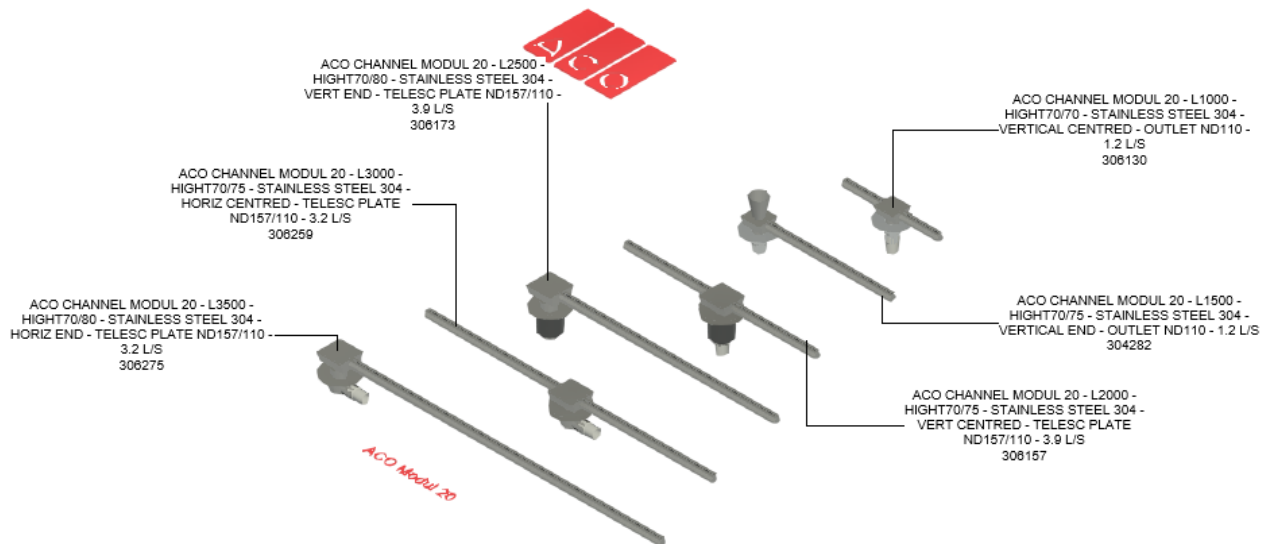


ACO Modul 20

User Guide for Autodesk Revit files



Introduction and overview:

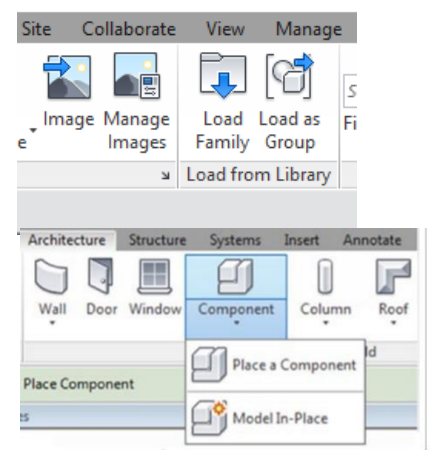
1. There are one family in the model incorporating Modul 20 and associate accessories.
2. Families are assigned to Omni class 23.70.50.24: wastewater drains.
3. User can select each family from the type selector in the project environment

File characteristics and contents:

1. File designed to be user friendly.
2. File is tagged with manufacture's name, code article and other relevant information.
3. Bill of materials (schedules) can also be accessed from the project environment.

Loading ACO Modul 20 into the project:

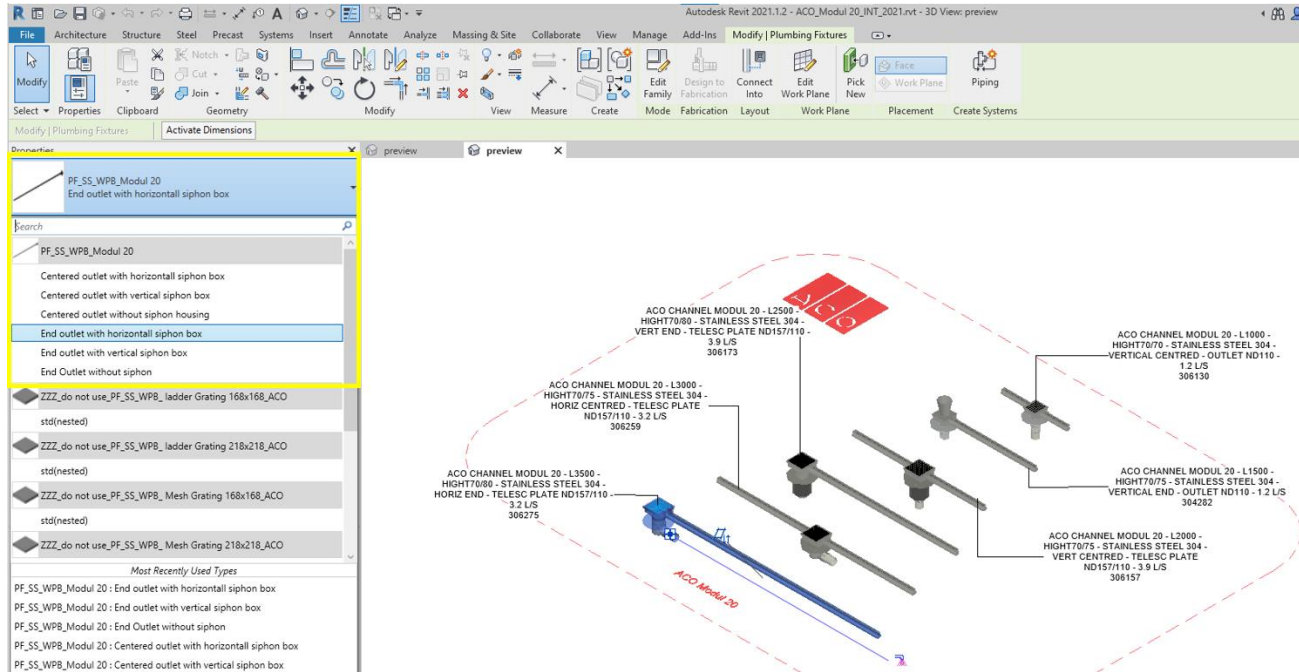
1. Download PF_SS_WPB_Modul 20.rfa file and save it to a suitable location.
2. Load the families into the project file
3. Navigate to the "Insert" icon on the Revit ribbon and click "Load Family"
4. The file can now be placed into your project. Navigate to the "Architecture/Component" icons on the Revit ribbon and click "Place a Component"



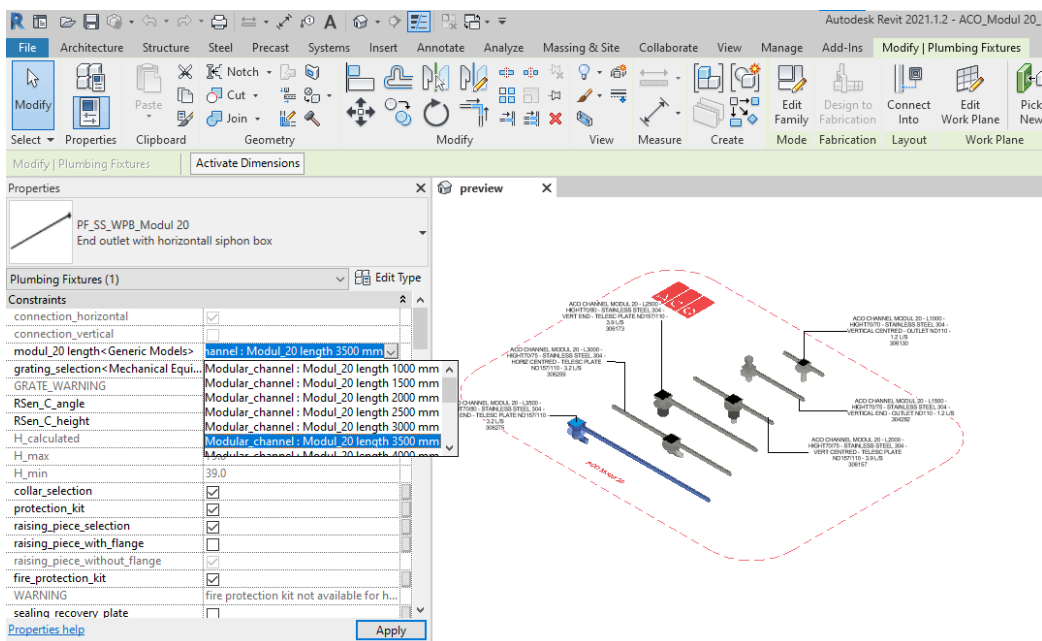
Placing of families

- Click on the model – At properties tool bar, it will display family name as PF_SS_WPB_Modul 20 and family types are:
 - Centered outlet without siphon box
 - End outlet without siphon box
 - Centered outlet with vertical siphon box
 - End outlet with vertical siphon box
 - Centered outlet with horizontal siphon box
 - End outlet with horizontal siphon box

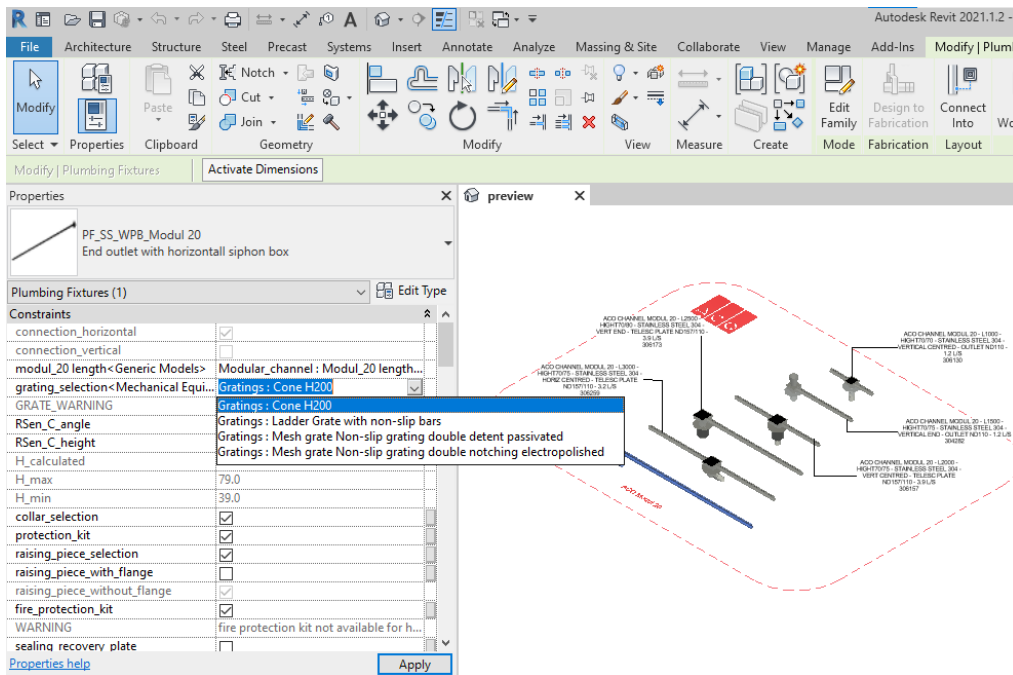
User can select any type range of product from dropdown menu.



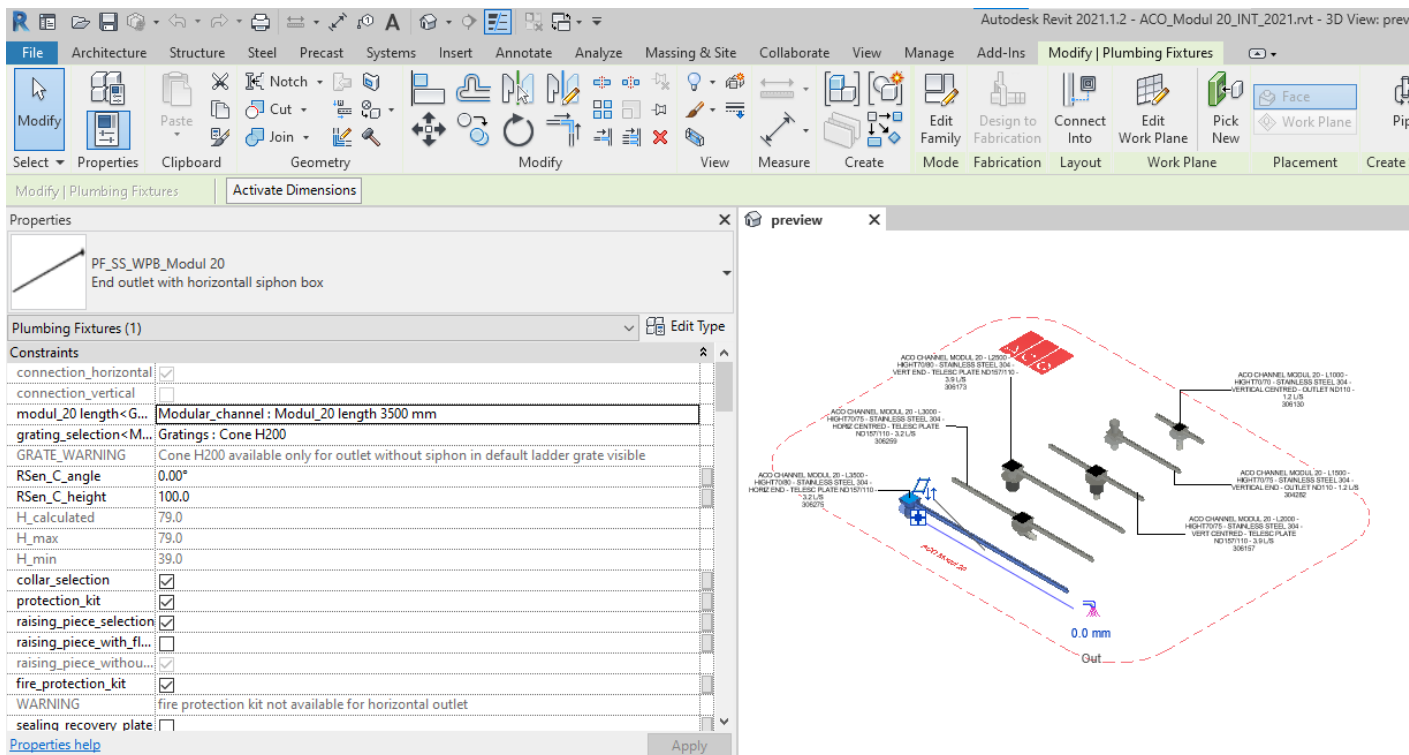
- Selection of length: Provided option for selecting different length of modular channel. In drop down menu, user can select the different length available.



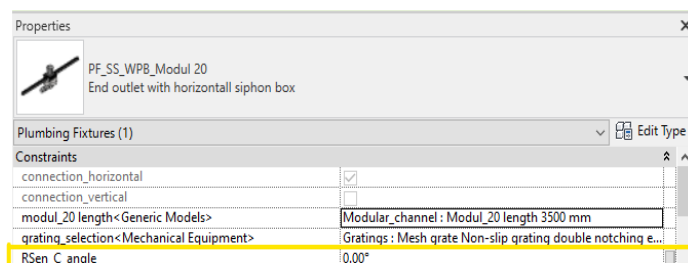
3. Selection of Grate: Provided option for selecting different types of grating. In drop down menu, user can select their required grating.



Selection of Cone: Cone is applicable only for outlet without siphon gully. with siphon box if we select Cone H200 it will pop the warning and in default it will set visible ladder grate.



4. Horizontal outlet rotation angle: In horizontal position, user have flexibility to rotate 360° by entering the value in RSen_C_angle.



5. Gully height adjustment: User have option to adjust the gully height by entering the value between H_min to H_max in Rsen_C_height dialog box.

RSen_C_height	100.0
H_calculated	79.0
H_max	79.0
H_min	39.0

6. Selection of raising piece: Provided tick option for selecting raising piece, once raising_piece is selected then user as to decide to select with flange or without flange by selecting tick option and user can enter their required raising piece height so it can vary within maximum and minimum value.

raising_piece_height	0.0
raising_piece_H_calculated	39.0
raising_H_max	79.0
raising_H_min	39.0

7. Selection of accessories: Provided tick option for selecting related accessories like, PVC collar, protection kit for outlet, fire protection kit and sealing recovery plate.

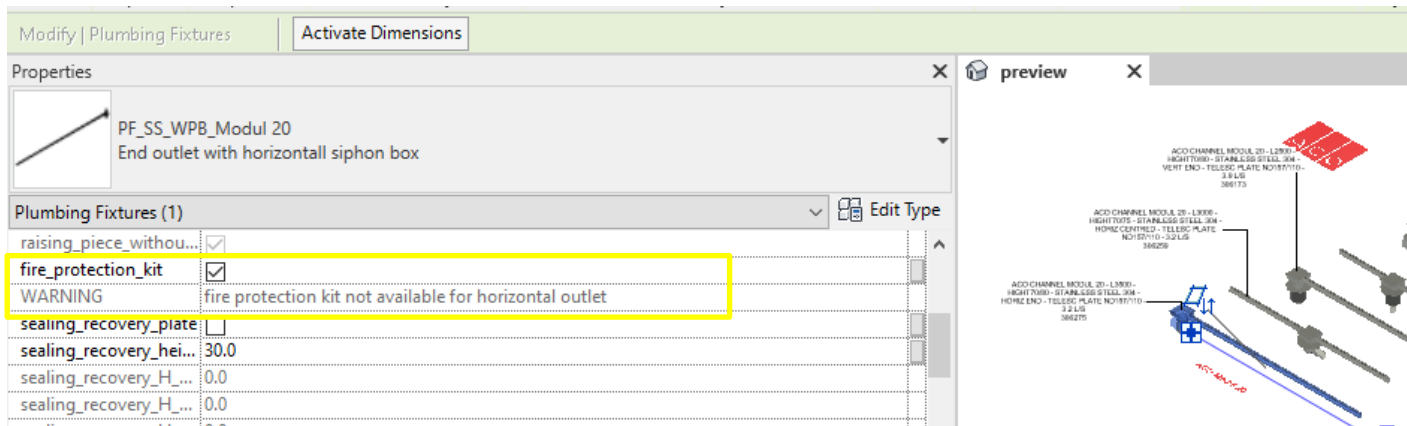
collar_selection	<input checked="" type="checkbox"/>
protection_kit	<input type="checkbox"/>
raising_piece_selection	<input type="checkbox"/>
raising_piece_with_fl...	<input type="checkbox"/>
raising_piece_withou...	<input checked="" type="checkbox"/>
fire_protection_kit	<input type="checkbox"/>
WARNING	--
sealing_recovery_plate	<input type="checkbox"/>
sealing_recovery_hei...	30.0
sealing_recovery_H...	0.0
sealing_recovery_H...	0.0
sealing_recovery_H...	0.0

8. Selection of seal recovery: Provided tick option for selecting seal recovery, once seal recovery is selected user can enter their required seal recovery height so it can vary within maximum and minimum value.

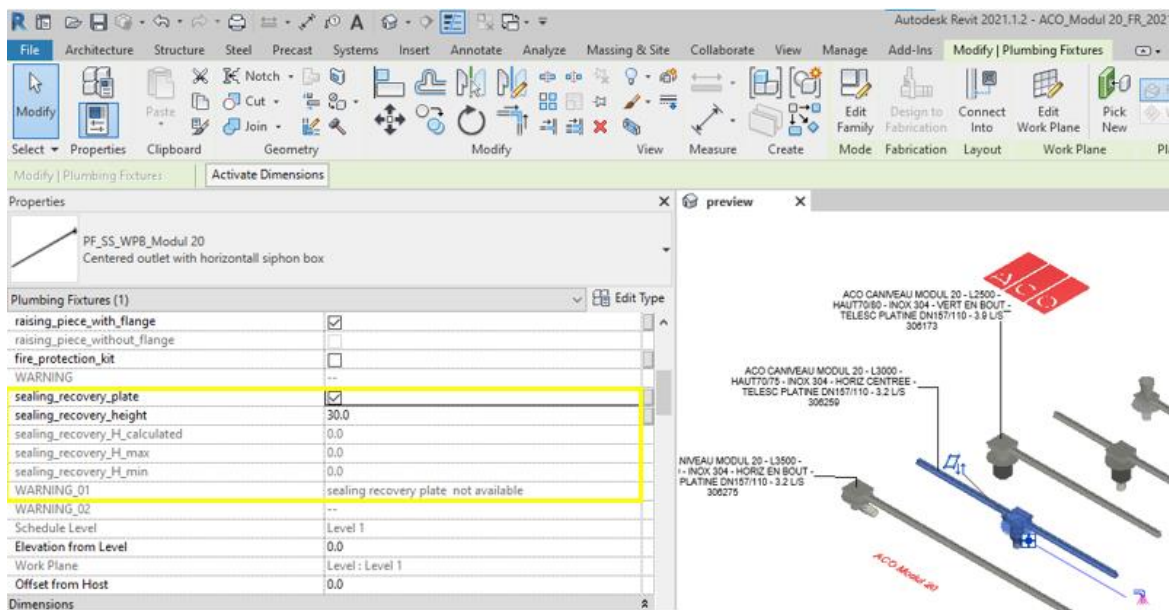
sealing_recovery_plate	<input checked="" type="checkbox"/>
sealing_recovery_height	0.0
sealing_recovery_H_calculated	15.0
sealing_recovery_H_max	92.0
sealing_recovery_H_min	15.0

9. Warning :

If Horizontal outlet has been selected and user selected fire protection kit it will showcase the warning.



If Modul 20 with gully is selected and user select sealing recovery plate, it will showcase the warning.



Material Library:

The ACO Modul 20 files contain materials that are already pre-loaded into the components. When loading the ACO Modul 20 files into your project the pre-loaded materials will automatically transfer through.

Schedules and quantities:

Information such as article number, GTIN data, weight, installation guidelines within the parameters is stored as “shared Parameters” so can easily appear when creating a schedule and quantities in the project environment.

ACO Modul 20						
<ACO Modul 20>						
A	B	C	D	E	F	
Number	Definition	Article Number	GTIN	Weight	Technical Information	
2	ACO TUNDISH 168X168 E25 BP25 / STAINLESS STEEL 304 PASSIVE	415918	—	1.60 kg	https://www.aco.fr/	ACO TUNDISH 168X1
2	ACO FIRE RESISTANT KIT / THERMAL INSULATION WITH FAT AND FAT HOLDER / FOR GULLY 157-110	416933	8590830253247	3.50 kg	https://www.aco.fr/	ACO FIRE RESISTANT
2	ACO LADDER GRATING 168X168 E25 BP25 - R50 - STAINLESS STEEL 304 ELECTRO - NONSLIP	416912	8590830253124	1.56 kg	https://www.aco.fr/	ACO LADDER GRATI
2	ACO MESH GRATING 19X19 218X218 E25 BP30 - L15 - STAINLESS STEEL 304 PASSIVATED - NONSLIP - ELECTRO-POLISHED	304343	—	1.50 kg	https://www.aco.fr/	ACO MESH GRATING
2	ACO MESH GRATING 19X19 218X218 E30 BP30 - L15 - STAINLESS STEEL 304 PASSIVATED - NONSLIP	304345	—	1.50 kg	https://www.aco.fr/	ACO MESH GRATING
1	ACO CHANNEL MODUL 20 - L1500 - HIGHT70/75 - STAINLESS STEEL 304 - VERTICAL CENTRED - OUTLET DN110 - 1.2 L/S	304282	—	8.10 kg	https://www.aco.fr/	ACO CHANNEL MODI
1	ACO CHANNEL MODUL 20 - L1000 - HIGHT70/75 - STAINLESS STEEL 304 - VERTICAL CENTRED - OUTLET DN110 - 1.2 L/S	306130	—	5.90 kg	https://www.aco.fr/	ACO CHANNEL MODI
1	ACO CHANNEL MODUL 20 - L2000 - HIGHT70/75 - STAINLESS STEEL 304 - VERT CENTRED - TEDESC PLATINE DN157/110 - 3.9 L/S	306157	—	13.60 kg	https://www.aco.fr/	ACO CHANNEL MODI
1	ACO CHANNEL MODUL 20 - L2500 - HIGHT70/80 - STAINLESS STEEL 304 - VERT END - TEDESC PLATE DN157/110 - 3.9 L/S	306173	—	14.30 kg	https://www.aco.fr/	ACO CHANNEL MODI
1	ACO CHANNEL MODUL 20 - L3000 - HIGHT70/75 - STAINLESS STEEL 304 - HORIZ CENTRED - TEDESC PLATE DN157/110 - 3.2 L/S	306259	—	16.50 kg	https://www.aco.fr/	ACO CHANNEL MODI
1	ACO CHANNEL MODUL 20 - L3500 - HIGHT70/80 - STAINLESS STEEL 304 - HORIZ END - TEDESC PLATE DN157/110 - 3.2 L/S	306275	—	17.50 kg	https://www.aco.fr/	ACO CHANNEL MODI
2	ACO PIPE PROTECTION SYSTEM ACO PROTEC / STAINLESS STEEL / FOR OUTLET DN110	304372	—	1.20 kg	https://www.aco.fr/	ACO PIPE PROTECTIC
3	ACO PIPE PROTECTION SYSTEM ACO PROTEC / STAINLESS STEEL 304 - FOR OUTLET BOX 157 - HORIZONTAL	307634	—	0.37 kg	https://www.aco.fr/	ACO PIPE PROTECTIC
3	ACO COUPLING / STAINLESS STEEL / DN110 TO PVC DN100 / FOR PVC BONDING	304314	—	0.16 kg	https://www.aco.fr/	ACO COUPLING / ST
2	ACO RAISING PIECES STAINLESS STEEL - FOR GULLY BODY DIAMETER 157 / WITH PLATE DIAMETER 358	408206	8590830107700	1.90 kg	https://www.aco.fr/	ACO RAISING PIECES
2	ACO RAISING PIECES STAINLESS STEEL - FOR GULLY BODY DIAMETER 157 / WITHOUT PLATE	408249	8590830108134	0.64 kg	https://www.aco.fr/	ACO RAISING PIECES
2	ACO SEALING PLATE DIAM 110 - OUTLET STAINLESS STEEL	304302	—	1.50 kg	https://www.aco.fr/	ACO SEALING PLATE