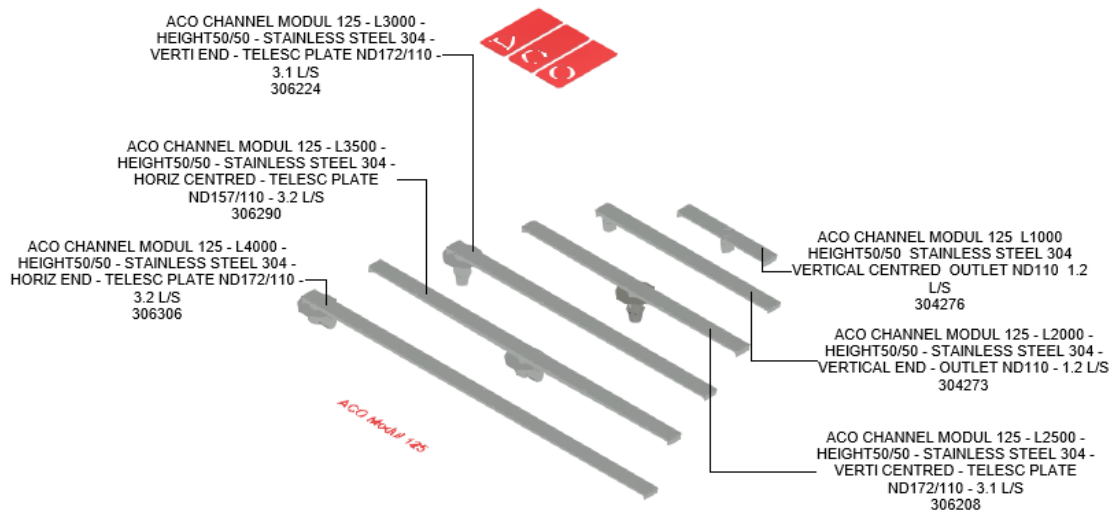


# ACO Modul 125

## User Guide for Autodesk Revit files



### Introduction and overview:

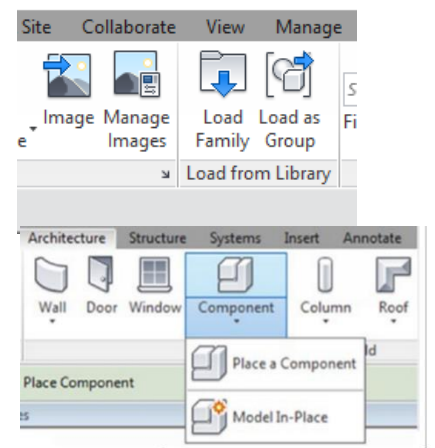
1. There are one family in the model incorporating Modul 125 and associate accessories.
2. Families are assigned to Omni class 23.70.50.21.24: wastewater drains.
3. User can select each family from the type selector in the project environment

### File characteristics and contents:

1. File designed to be user friendly.
2. File is tagged with manufacture's name, code article and other relevant information.
3. Bill of materials (schedules) can also be accessed from the project environment.

### Loading ACO Modul 125 into the project:

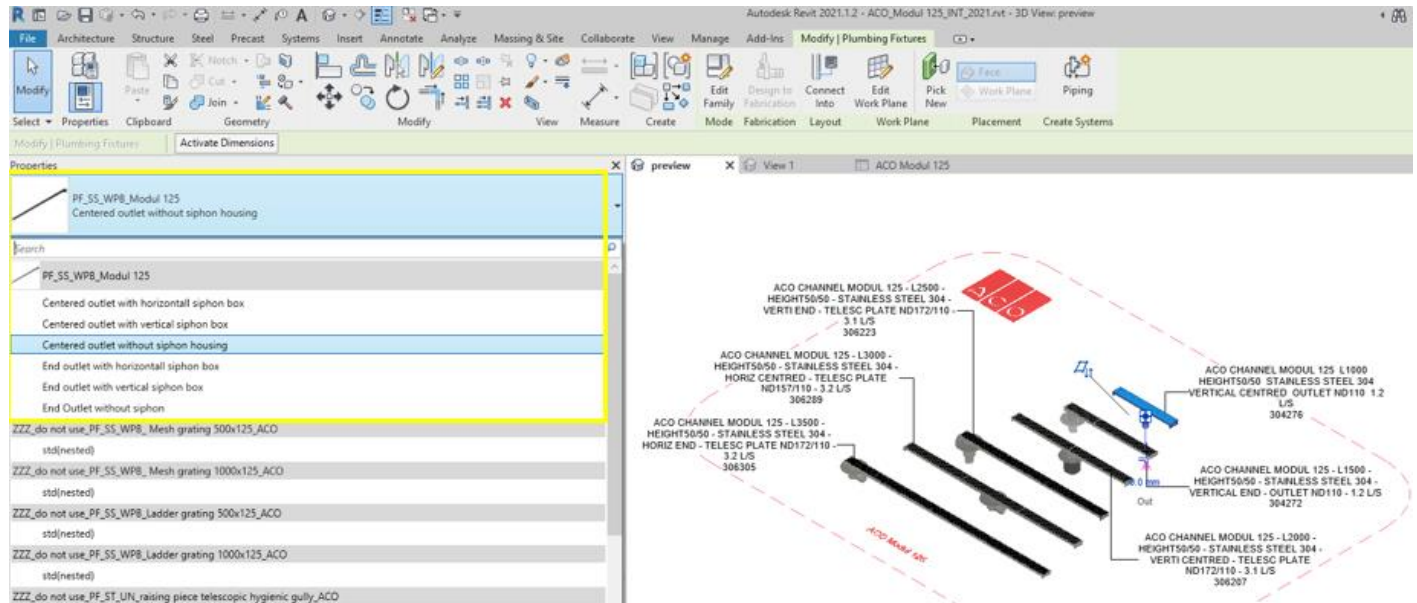
1. Download PF\_SS\_WPB\_Modul 125.rfa file and save it to a suitable location.
2. Load the families into the project file
3. Navigate to the "Insert" icon on the Revit ribbon and click "Load Family"
4. The file can now be placed into your project. Navigate to the "Architecture/Component" icons on the Revit ribbon and click "Place a Component"



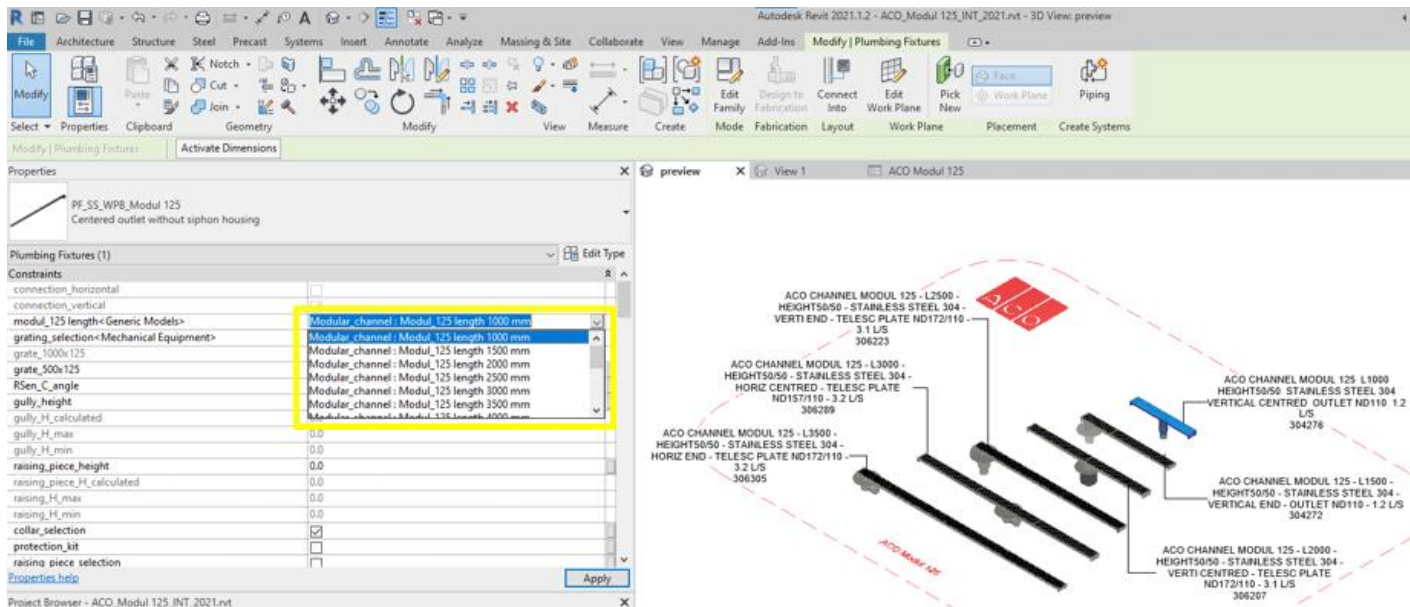
## Placing of families

- Click on the model – At properties tool bar, it will display family name as PF\_SS\_WPB\_Modul 125 and family types are:
  - Centered outlet without siphon box
  - End outlet without siphon box
  - Centered outlet with vertical siphon box
  - End outlet with vertical siphon box
  - Centered outlet with horizontal siphon box
  - End outlet with horizontal siphon box

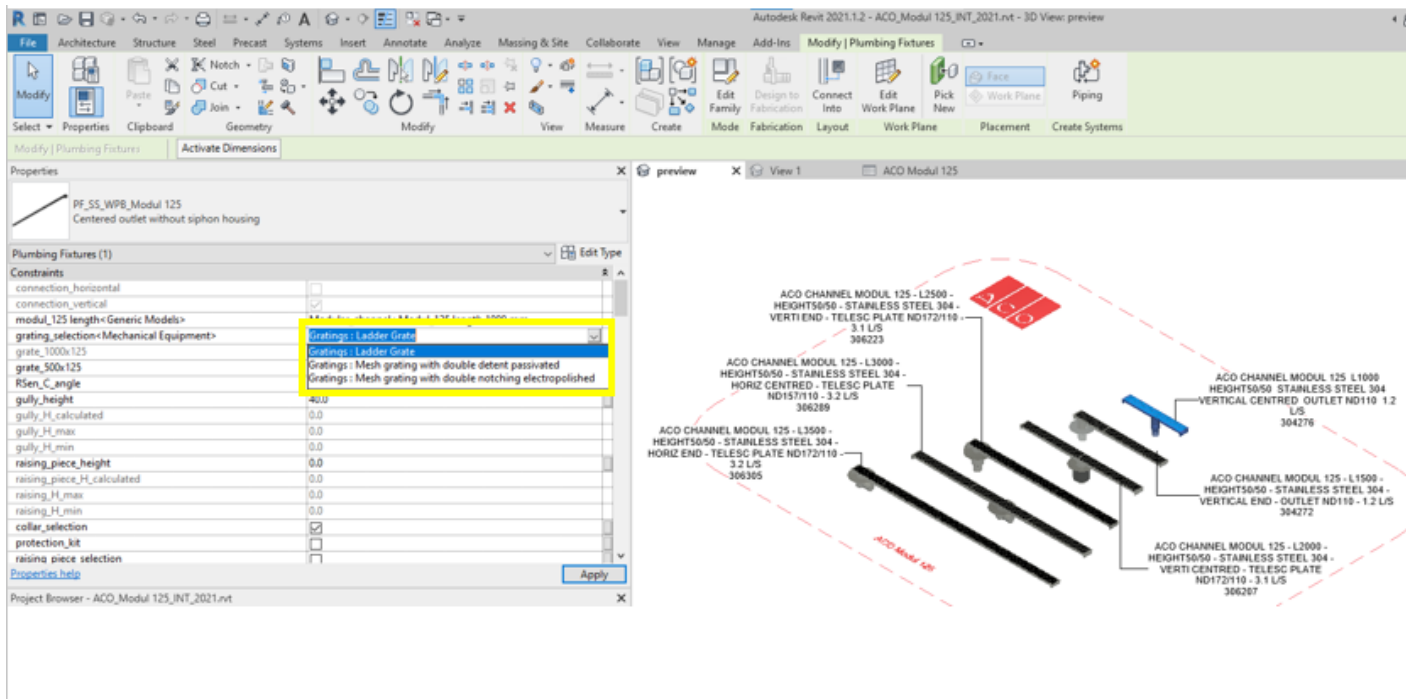
User can select any type range of product from dropdown menu.



- Selection of length: Provided option for selecting different length of modular channel. In drop down menu, user can select the different length available.



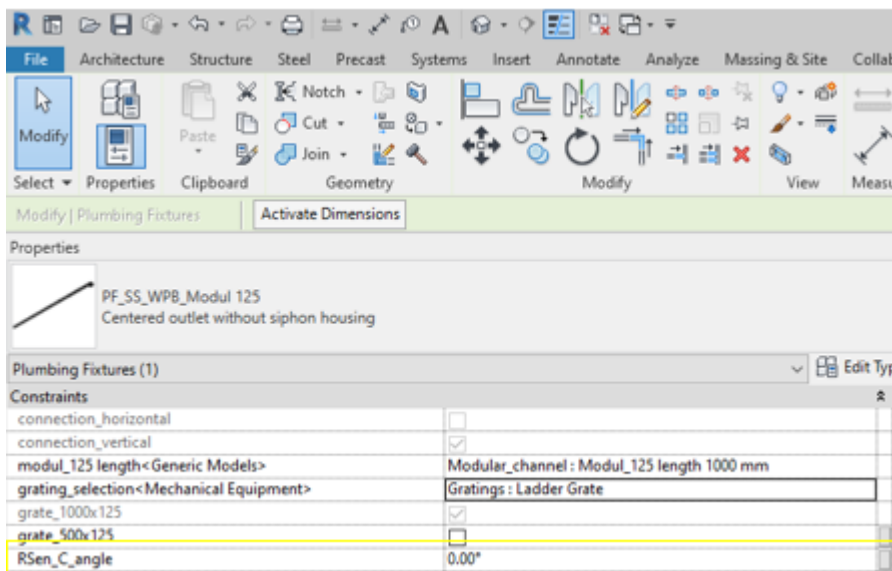
3. Selection of Grate: Provided option for selecting different types of grating. In drop down menu, user can select their required grating.



User can select the grating size. There are two sizes: 1000x125 and 500x125. By default, it will be in 1000x125 size if user want to go with 500x125, there is a parameter with name `grate_500x125`, If they tick that option then automatically 1000x125 size will be disabled and it will take the size of 500x125.

<code>grate_1000x125</code>	<input checked="" type="checkbox"/>
<code>grate_500x125</code>	<input type="checkbox"/>

4. Horizontal outlet rotation angle: In horizontal position, user have flexibility to rotate 360° by entering the value in `RSen_C_angle`.



5. Gully height adjustment: User have option to adjust the gully height by entering the value between `H_min` to `H_max` in `RSen_C_height` dialog box.

<code>RSen_C_height</code>	0.0
<code>H_calculated</code>	57.0
<code>H_max</code>	91.0
<code>H_min</code>	57.0

6. Selection of raising piece: Provided tick option for selecting raising piece, once raising\_piece is selected then user as to decide to select with flange or without flange by selecting tick option and user can enter their required raising piece height so it can vary within maximum and minimum value.

raising_piece	<input type="checkbox"/>
raising_piece_with_flange	<input type="checkbox"/>
raising_piece_without_flange	<input checked="" type="checkbox"/>

raising_piece_height	0.0
raising_piece_H_calculated	39.0
raising_H_max	79.0
raising_H_min	39.0

7. Selection of accessories: Provided tick option for selecting related accessories like, PVC collar, protection kit for outlet, fire protection kit and sealing recovery plate.


collar_selection	<input type="checkbox"/>
protection_kit	<input type="checkbox"/>
raising_piece_selection	<input type="checkbox"/>
raising_piece_with_flange	<input type="checkbox"/>
raising_piece_without_flange	<input checked="" type="checkbox"/>
fire_protection_kit	<input type="checkbox"/>
WARNING	--
sealing_recovery_plate	<input type="checkbox"/>
WARNING_01	--
WARNING_02	-

8. Selection of seal recovery: Provided tick option for selecting seal recovery, once seal recovery is selected user can enter their required seal recovery height so it can vary within maximum and minimum value.

sealing_recovery_plate	<input checked="" type="checkbox"/>
sealing_recovery_height	0.0
sealing_recovery_H_calculated	15.0
sealing_recovery_H_max	92.0
sealing_recovery_H_min	15.0

9. Warning :

If Horizontal outlet has been selcted and user selected fire protection kit it will showcase the warning.

Properties	
 PF_SS_WPB_Modul 125 End outlet with horizontall siphon box	
Plumbing Fixtures (1) <span>Edit Typ</span>	
H_calculated	57.0
H_max	91.0
H_min	57.0
connection_horizontal	<input checked="" type="checkbox"/>
connection_vertical	<input type="checkbox"/>
centered_outlet	<input type="checkbox"/>
end_outlet	<input checked="" type="checkbox"/>
collar_selection	<input checked="" type="checkbox"/>
protection_kit	<input type="checkbox"/>
raising_piece_selection	<input type="checkbox"/>
raising_piece_with_flange	<input type="checkbox"/>
raising_piece_without_flange	<input checked="" type="checkbox"/>
fire_protection_kit	<input checked="" type="checkbox"/>
WARNING	fire protection kit not available for horizontal outlet

If Modul 125 with gully is selected and user select sealing recovery plate, it will showcase the warning.

PF\_SS\_WPB\_Modul 125  
End outlet with vertical siphon box

Plumbing Fixtures (1) Edit Type

H_calculated	72.0
H_max	106.0
H_min	72.0
connection_horizontal	<input type="checkbox"/>
connection_vertical	<input checked="" type="checkbox"/>
centered_outlet	<input type="checkbox"/>
end_outlet	<input checked="" type="checkbox"/>
collar_selection	<input type="checkbox"/>
protection_kit	<input type="checkbox"/>
raising_piece_selection	<input type="checkbox"/>
raising_piece_with_flange	<input type="checkbox"/>
raising_piece_without_flange	<input checked="" type="checkbox"/>
fire_protection_kit	<input type="checkbox"/>
WARNING	--
sealing_recovery_plate	<input checked="" type="checkbox"/>
WARNING_01	sealing recovery plate not available

## Material Library:

The ACO Modul 125 files contain materials that are already pre-loaded into the components. When loading the ACO Modul 125 files into your project the pre-loaded materials will automatically transfer through.

## Schedules and quantities:

Information such as article number, GTIN data, weight, installation guidelines within the parameters is stored as “shared Parameters” so can easily appear when creating a schedule and quantities in the project environment.

ACO Modul 125 X

ACO

<ACO Modul 125>

A	B	C	D	E	F	G
Number	Definition	Article Number	GTIN	Weight	Technical Information	desc_uk
1	ACO FIRE RESISTANT KIT / THERMAL INSULATION WITH FAT AND FAT HOLDER / FOR GULLY 157-110	416933	8590830253247	3.50 kg	<a href="https://www.aco.fr/">https://www.aco.fr/</a>	ACO FIRE RESISTANT KIT / THERMAL INSULATION WITH FAT
1	ACO LADDER GRATING 123x499mm CL.R50 - AD BP20x4 M19 AISI 304	413327		2.20 kg	<a href="https://www.aco.fr/">https://www.aco.fr/</a>	ACO LADDER GRATING 123x499mm CL.R50 - AD BP20x4 M19
7	ACO LADDER GRATING 123x999mm CL.R50 - AD BP20x4 M19 AISI 304	413329		4.40 kg	<a href="https://www.aco.fr/">https://www.aco.fr/</a>	ACO LADDER GRATING 123x999mm CL.R50 - AD BP20x4 M19
1	ACO MESH GRATING 125X500 M19X19 - PASSIVATED NONSLIP STAINLESS STEEL	304365		1.50 kg	<a href="https://www.aco.fr/">https://www.aco.fr/</a>	ACO MESH GRATING 125X500 M19X19 - PASSIVATED NONSLIP
1	ACO MESH GRATING 125X500 M19X19 - ELECTROPOLISHED NONSLIP STAINLESS STEEL	304368		1.50 kg	<a href="https://www.aco.fr/">https://www.aco.fr/</a>	ACO MESH GRATING 125X500 M19X19 - ELECTROPOLISHED NONSLIP
2	ACO MESH GRATING 125X1000 M19X19 - PASSIVATED NONSLIP STAINLESS STEEL	304364		3.00 kg	<a href="https://www.aco.fr/">https://www.aco.fr/</a>	ACO MESH GRATING 125X1000 M19X19 - PASSIVATED NONSLIP
3	ACO MESH GRATING 125X1000 M19X19 - ELECTROPOLISHED NONSLIP STAINLESS STEEL	304367		3.00 kg	<a href="https://www.aco.fr/">https://www.aco.fr/</a>	ACO MESH GRATING 125X1000 M19X19 - ELECTROPOLISHED NONSLIP
1	ACO CHANNEL MODUL 125 - L1500 - HEIGHTS50/50 - STAINLESS STEEL 304 - VERTICAL END - OUTLET ND110 - 1.	304272	-	8.50 kg	<a href="https://www.aco.fr/">https://www.aco.fr/</a>	ACO CHANNEL MODUL 125 - L1500 - HEIGHTS50/50 - STAINLESS STEEL 304 - VERTICAL END - OUTLET ND110 - 1.
1	ACO CHANNEL MODUL 125 - L1000 - HEIGHTS50/50 - STAINLESS STEEL 304 - VERTICAL CENTRED OUTLET ND110 - 1.	304276	-	5.40 kg	<a href="https://www.aco.fr/">https://www.aco.fr/</a>	ACO CHANNEL MODUL 125 - L1000 - HEIGHTS50/50 - STAINLESS STEEL 304 - VERTICAL CENTRED OUTLET ND110 - 1.
1	ACO CHANNEL MODUL 125 - L2000 - HEIGHTS50/50 - STAINLESS STEEL 304 - VERTICAL CENTRED - TEDESC PLATE ND172/1	306207	-	13.50 kg	<a href="https://www.aco.fr/">https://www.aco.fr/</a>	ACO CHANNEL MODUL 125 - L2000 - HEIGHTS50/50 - STAINLESS STEEL 304 - VERTICAL CENTRED - TEDESC PLATE ND172/1
1	ACO CHANNEL MODUL 125 - L2500 - HEIGHTS50/50 - STAINLESS STEEL 304 - VERTICAL CENTRED - TEDESC PLATE ND172/1	306223	-	13.50 kg	<a href="https://www.aco.fr/">https://www.aco.fr/</a>	ACO CHANNEL MODUL 125 - L2500 - HEIGHTS50/50 - STAINLESS STEEL 304 - VERTICAL CENTRED - TEDESC PLATE ND172/1
1	ACO CHANNEL MODUL 125 - L3000 - HEIGHTS50/50 - STAINLESS STEEL 304 - HORIZ CENTRED - TEDESC PLATE ND172/1	306289	-	17.60 kg	<a href="https://www.aco.fr/">https://www.aco.fr/</a>	ACO CHANNEL MODUL 125 - L3000 - HEIGHTS50/50 - STAINLESS STEEL 304 - HORIZ CENTRED - TEDESC PLATE ND172/1
1	ACO CHANNEL MODUL 125 - L3500 - HEIGHTS50/50 - STAINLESS STEEL 304 - HORIZ END - TEDESC PLATE ND172/1	306305	-	16.60 kg	<a href="https://www.aco.fr/">https://www.aco.fr/</a>	ACO CHANNEL MODUL 125 - L3500 - HEIGHTS50/50 - STAINLESS STEEL 304 - HORIZ END - TEDESC PLATE ND172/1
1	ACO PIPE PROTECTION SYSTEM ACO PROTEC / STAINLESS STEEL / FOR OUTLET DN110	304372	-	1.20 kg	<a href="https://www.aco.fr/">https://www.aco.fr/</a>	ACO PIPE PROTECTION SYSTEM ACO PROTEC / STAINLESS STEEL / FOR OUTLET DN110
1	ACO PIPE PROTECTION SYSTEM ACO PROTEC / STAINLESS STEEL 304 - FOR OUTLET BOX 157 - HORIZONTAL	307634	-	0.37 kg	<a href="https://www.aco.fr/">https://www.aco.fr/</a>	ACO PIPE PROTECTION SYSTEM ACO PROTEC / STAINLESS STEEL 304 - FOR OUTLET BOX 157 - HORIZONTAL
1	ACO COUPLING / STAINLESS STEEL / DN110 TO PVC DN100 / FOR PVC BONDING	304314	-	0.16 kg	<a href="https://www.aco.fr/">https://www.aco.fr/</a>	ACO COUPLING / STAINLESS STEEL / DN110 TO PVC DN100 / FOR PVC BONDING
1	ACO RAISING PIECES STAINLESS STEEL - FOR GULLY BODY DIAMETER 157 / WITH PLATE DIAMETER 358	408206	8590830107700	1.90 kg	<a href="https://www.aco.fr/">https://www.aco.fr/</a>	ACO RAISING PIECES STAINLESS STEEL - FOR GULLY BODY DIAMETER 157 / WITH PLATE DIAMETER 358
1	ACO RAISING PIECES STAINLESS STEEL - FOR GULLY BODY DIAMETER 157 / WITHOUT PLATE	408249	8590830108134	0.64 kg	<a href="https://www.aco.fr/">https://www.aco.fr/</a>	ACO RAISING PIECES STAINLESS STEEL - FOR GULLY BODY DIAMETER 157 / WITHOUT PLATE
1	ACO PLATINE D'ETANCHÉITE DIAM 110 - ACIER INOX POUR MANCHON	304302	-	0.00 kg	<a href="https://www.aco.fr/">https://www.aco.fr/</a>	ACO PLATINE D'ETANCHÉITE DIAM 110 - ACIER INOX POUR MANCHON