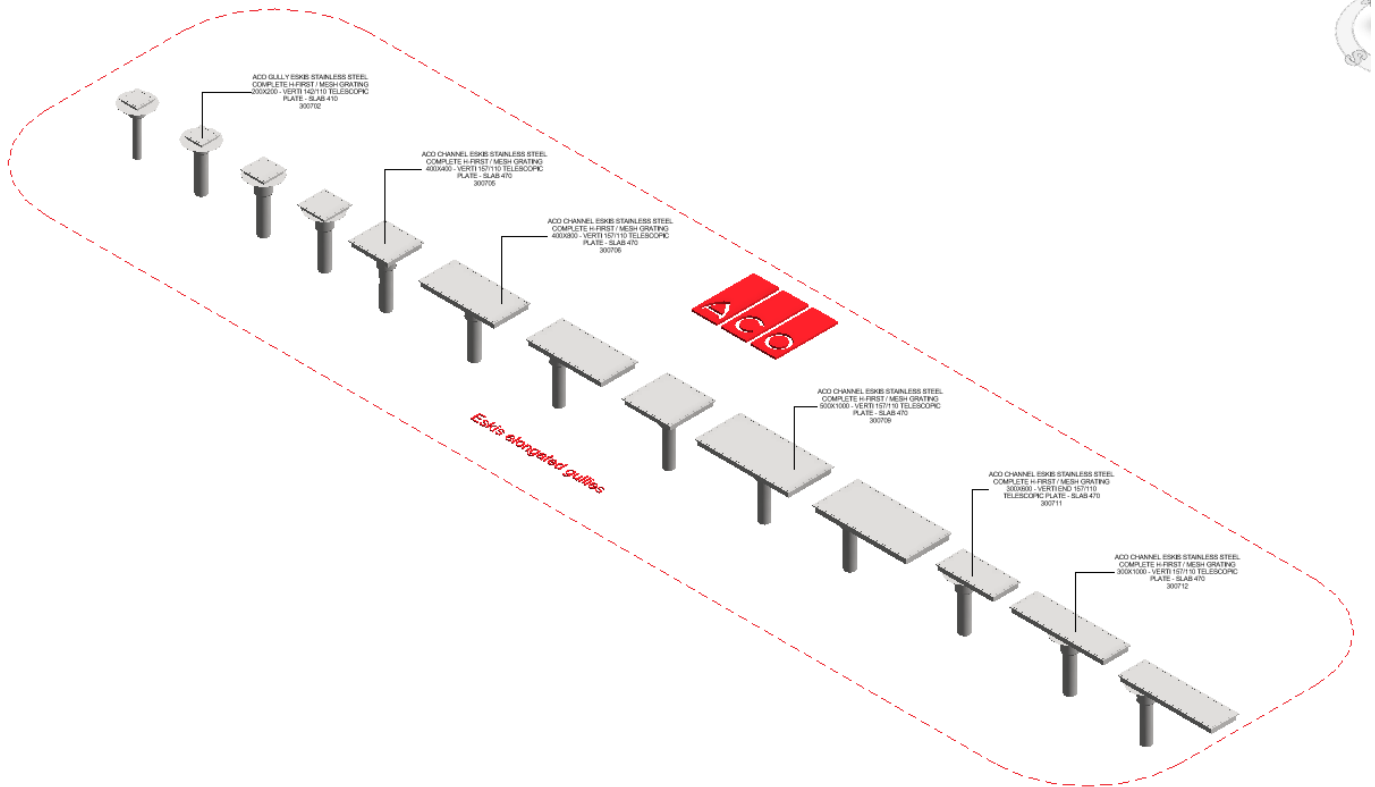


ACO Eskis elongated gullies

User Guide for Autodesk Revit files



Introduction and overview:

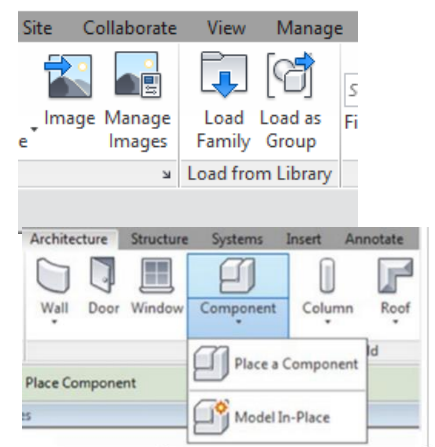
1. There are one family in the model incorporating Eskis gully and the associated accessories.
2. Families are assigned to Omni class 23.70.50.21.24: wastewater drains.
3. User can select each family from the type selector in the project environment.

File characteristics and contents:

1. File is under 3 MB and designed to be user friendly.
2. File is tagged with manufacture's name, specification codes and other relevant information.
3. Bill of materials (schedules) can also be accessed from the project environment.

Loading ACO Eskis hygiene first into the project:

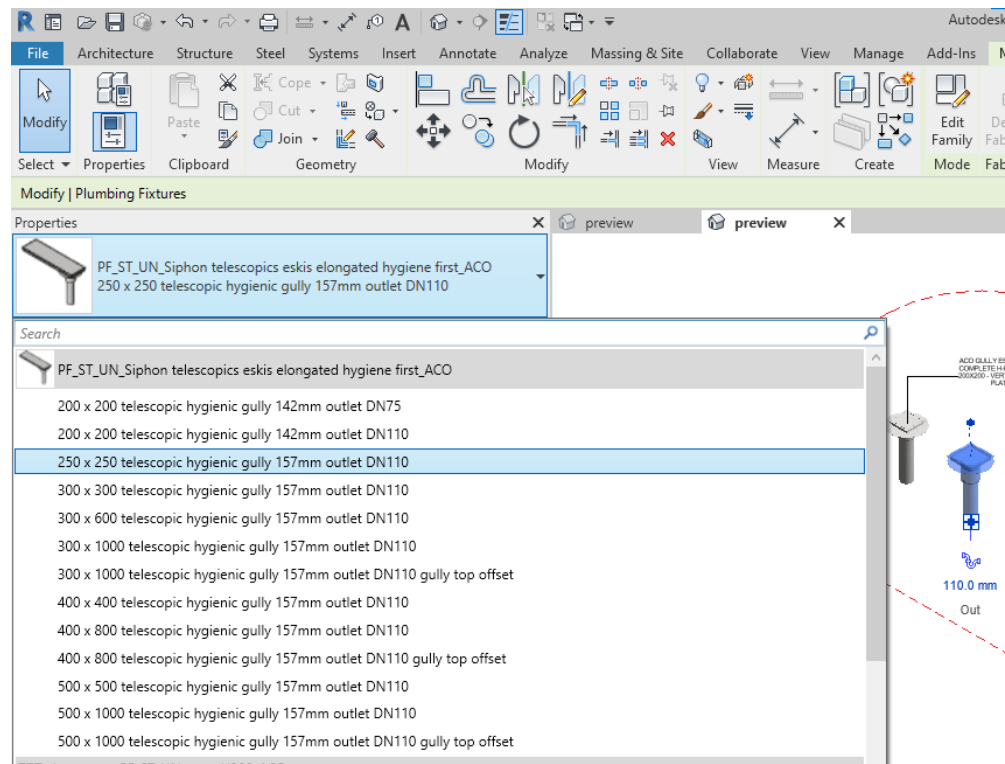
1. Download the PF_ST_UN_Siphon telescopic eskis elongated hygiene first .rfa file and save it to a suitable location.
2. Load the families into the project file.
3. Navigate to the "Insert" icon on the Revit ribbon and click "Load Family".
4. The file can now be placed into your project. Navigate to the "Architecture/Component" icons on the Revit ribbon and click "Place a Component".



Placing of families

- 1. Click on the model – At properties tool bar, it will display family name as PF_ST_UN_Siphon telescopic esgis elongated hygiene first and family types are 200 x 200, 300 x 300 etc.

User end can select any type of product range from dropdown menu.



- 2. Gully height adjustment: User have option to adjust the gully height by entering the value between H_min to H_max in Rsen_C_height dialog box.

RSen_C_height	55.0	
H_min	42.0	
H_max	63.0	
raising_piece	<input type="checkbox"/>	

- 3. Selection of Riser piece: Provided tick option for selecting raising piece, once raising_piece is selected then user as to decide to select with flange or without flange by selecting tick option.

raising_piece	<input type="checkbox"/>	
raising_piece_with_flange	<input type="checkbox"/>	
raising_piece_without_flange	<input checked="" type="checkbox"/>	

- 4. Selection of accessories: Provided tick option for selecting related accessories like, PVC collar, cone bucket, protection kit for outlet and fire protection kit.



collar_selection	<input type="checkbox"/>	
DN75_collar_outlet	<input type="checkbox"/>	
DN110_collar_outlet	<input checked="" type="checkbox"/>	
cone_bucket_selection	<input type="checkbox"/>	
protection_kit	<input type="checkbox"/>	
fire_protection_kit	<input type="checkbox"/>	

Material Library:

The ACO ESKIS elongated gully files contain materials that are already pre-loaded into the components. When loading the ACO ESKIS files into your project the pre-loaded materials will automatically transfer through.

Schedules and quantities:

The information such as article number, GTIN data, weight, installation guidelines within the parameters is stored as “shared Parameters” so it can easily appear when creating a schedule and quantities in the project environment.

<div> <div>preview</div> <div>preview</div> <div>Hygienic gullies and accessories X</div> </div> <div>   </div> <div><Hygienic gullies and accessories></div>					
A	B	C	D	E	F
n	Description	Articlenumber	GTIN	Weight	Technical information
1	ACO SIPHON ESKIS INOX COMPLET H-FIRST / CAILLEBOTIS 200X200 - VERTI 142/75 TEL PLAT - DALLE 410	300701	--	5.21 kg	https://www.aco.fr/
1	ACO SIPHON ESKIS INOX COMPLET H-FIRST / CAILLEBOTIS 200X200 - VERTI 142/110 TEL PLAT - DALLE 410	300702	--	5.51 kg	https://www.aco.fr/
1	ACO SIPHON ESKIS INOX COMPLET H-FIRST / CAILLEBOTIS 250X250 - VERTI 157/110 TEL PLAT - DALLE 470	300703	--	7.05 kg	https://www.aco.fr/
1	ACO SIPHON ESKIS INOX COMPLET H-FIRST / CAILLEBOTIS 300X300 - VERTI 157/110 TEL PLAT - DALLE 470	300704	--	9.35 kg	https://www.aco.fr/
1	ACO CANIVEAU ESKIS INOX COMPLET H-FIRST / CAILLEBOTIS 400X400 - VERTI 157/110 TEL PLAT - DALLE 470	300705	--	12.43 kg	https://www.aco.fr/
1	ACO CANIVEAU ESKIS INOX COMPLET H-FIRST / CAILLEBOTIS 400X800 - VERTI 157/110 TEL PLAT - DALLE 470	300706	--	17.07 kg	https://www.aco.fr/
1	ACO CANIVEAU ESKIS INOX COMPLET H-FIRST / CAILLEBOTIS 400X800 - VERTI BOUT 157/110 TEL PLAT - DALLE 470	300707	--	15.23 kg	https://www.aco.fr/
1	ACO CANIVEAU ESKIS INOX COMPLET H-FIRST / CAILLEBOTIS 500X500 - VERTI 157/110 TEL PLAT - DALLE 470	300708	--	15.31 kg	https://www.aco.fr/
1	ACO CANIVEAU ESKIS INOX COMPLET H-FIRST / CAILLEBOTIS 500X1000 - VERTI 157/110 TEL PLAT - DALLE 470	300709	--	24.65 kg	https://www.aco.fr/
1	ACO CANIVEAU ESKIS INOX COMPLET H-FIRST / CAILLEBOTIS 500X1000 - VERTI BOUT 157/110 TEL PLAT - DALLE 47	300710	--	26.88 kg	https://www.aco.fr/
1	ACO CANIVEAU ESKIS INOX COMPLET H-FIRST / CAILLEBOTIS 300X600 - VERTI BOUT 157/110 TEL PLAT - DALLE 470	300711	--	13.15 kg	https://www.aco.fr/
1	ACO CANIVEAU ESKIS INOX COMPLET H-FIRST / CAILLEBOTIS 300X1000 - VERTI 157/110 TEL PLAT - DALLE 470	300712	--	13.95 kg	https://www.aco.fr/
1	ACO CANIVEAU ESKIS INOX COMPLET H-FIRST / CAILLEBOTIS 300X1000 - VERTI BOUT 157/110 TEL PLAT - DALLE 47	300713	--	14.83 kg	https://www.aco.fr/

ACO telescopic ESKIS elongated hygienic gully : 13