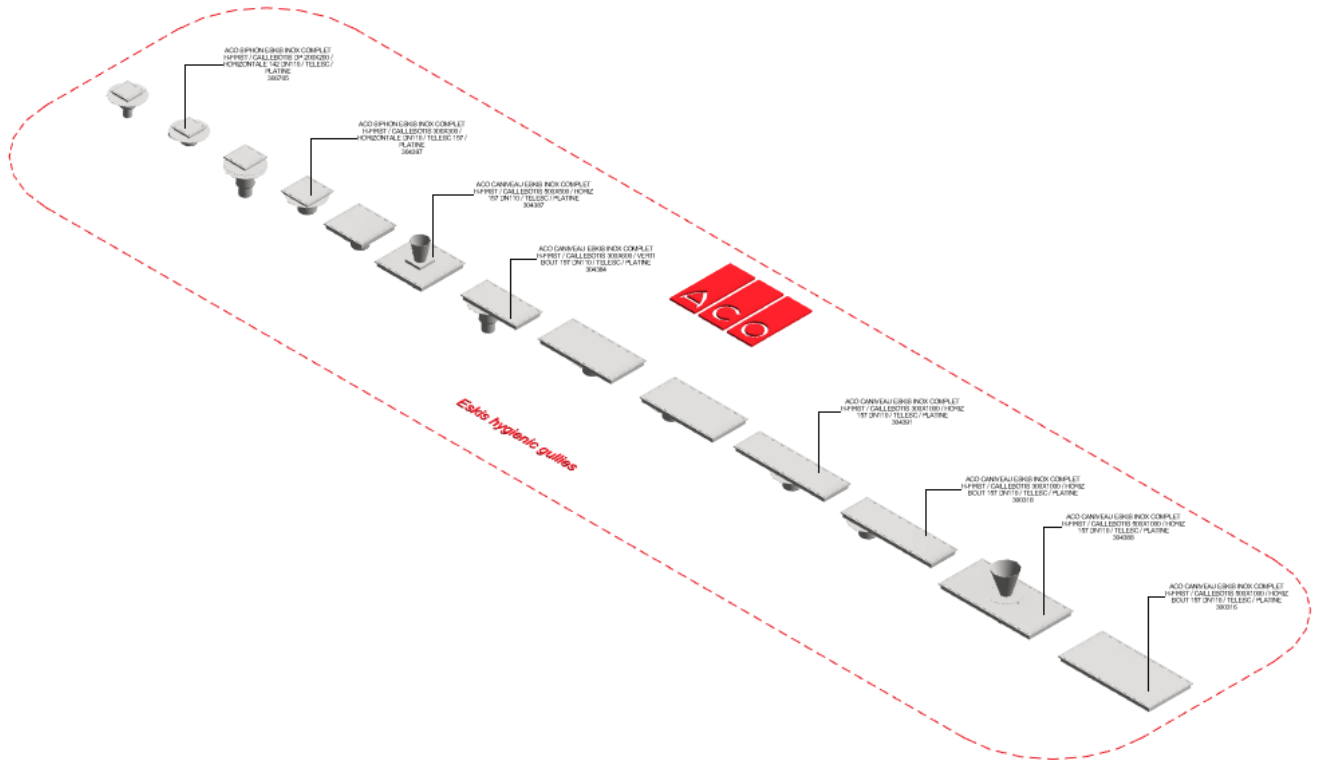


# ACO Eskis Hygiene first

## User Guide for Autodesk Revit files



### Introduction and overview:

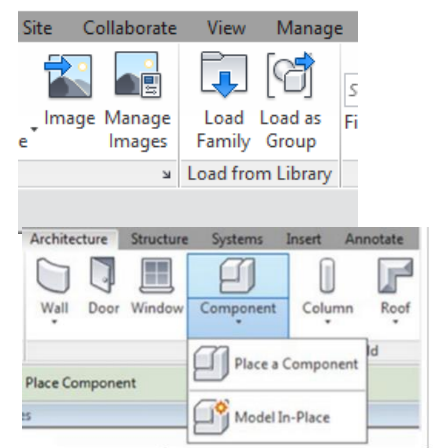
1. There is one family in the model incorporating Eskis gully and the associated accessories.
2. Families are assigned to Omni class 23.70.50.21.24: wastewater drains.
3. User can select each family from the type selector in the project environment

### File characteristics and contents:

1. File is under 2.5 MB and designed to be user friendly.
2. File is tagged with manufacturer's name, specification codes and other relevant information.
3. Bill of materials (schedules) can also be accessed from the project environment.

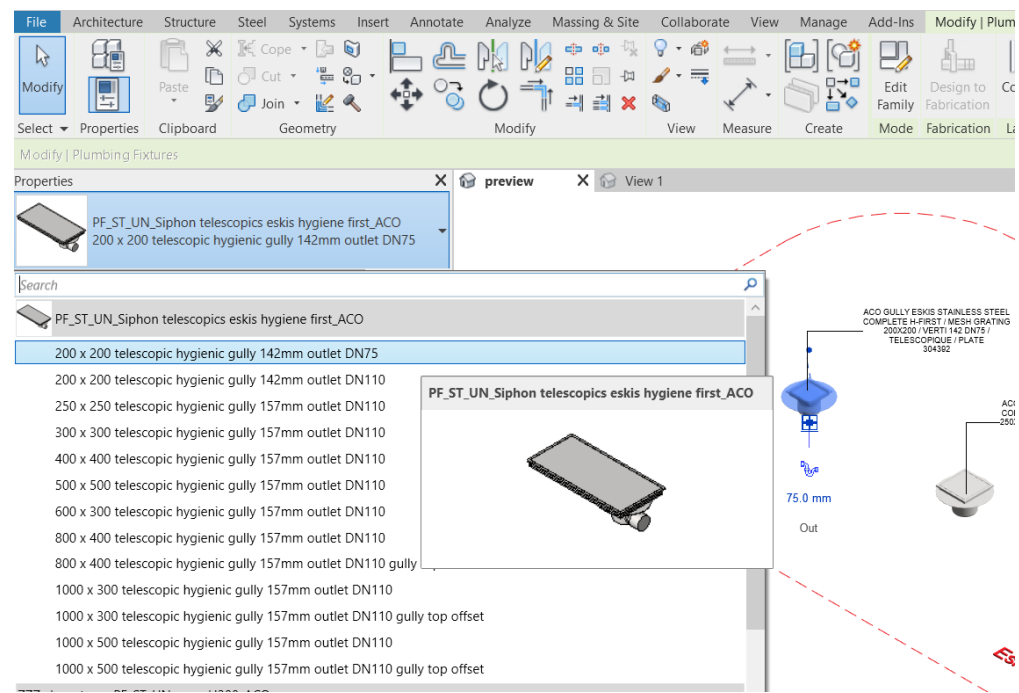
### Loading ACO Eskis hygiene first into the project:

1. Download the PF\_ST\_UN\_Siphon telescopic eskis hygiene first .rfa file and save it into a suitable location
2. Load the families into the project file
3. Navigate to the "Insert" icon on the Revit ribbon and click "Load Family"
4. The file can now be placed into your project. Navigate to the "Architecture/Component" icons on the Revit ribbon and click "Place a Component"

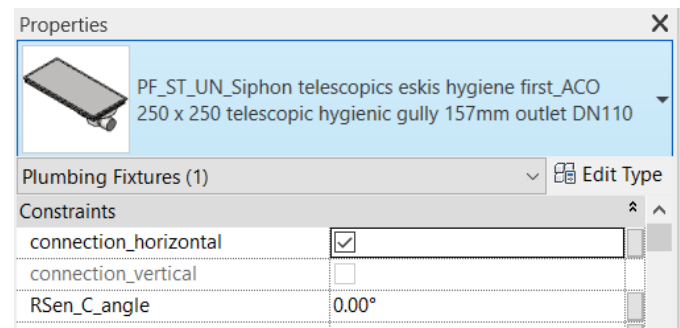


Placing of families

1. Click on the model – At properties tool bar, it will display family name as PF\_ST\_UN\_Siphon telescopic esgis hygiene first and family types are 200 x 200, 300 x 300 etc.  
User end can select any type range of product from dropdown menu



2. Selection of outlet position:
- Provided tick option for selecting the horizontal\_connection and vertical\_connection.
  - In horizontal position, user has possibility to rotate the outlet by 360° in entering the value in RSen\_C\_angle.



3. Gully height adjustment: User has option to adjust the gully height by entering the value between H\_min to H\_max in RSen\_C\_height dialog box.

RSen_C_height	55.0
H_min	42.0
H_max	63.0
raising_piece	<input type="checkbox"/>

4. Selection of Riser piece: Provided tick option for selecting raising piece, once raising\_piece is selected then user has to decide to select with flange or without flange by selecting tick option.

raising_piece	<input type="checkbox"/>
raising_piece_with_flange	<input type="checkbox"/>
raising_piece_without_flange	<input checked="" type="checkbox"/>

5. Selection of accessories: Provided tick option for selecting related accessories like, PVC collar, cone bucket, protection kit for outlet and fire protection kit.

collar_selection	<input type="checkbox"/>
DN75_collar_outlet	<input type="checkbox"/>
DN110_collar_outlet	<input checked="" type="checkbox"/>
cone_bucket_selection	<input type="checkbox"/>
protection_kit	<input type="checkbox"/>
fire_protection_kit	<input type="checkbox"/>

## Material Library:

The ACO Eskis Hygiene first files contain materials that are already pre-loaded into the components. When loading the ACO Eskis files into your project the pre-loaded materials will automatically transfer through.

## Schedules and quantities:

Information such as article number, GTIN data, weight, installation guidelines within the parameters is stored as “shared Parameters” so it can easily appear when creating a schedule and quantities in the project environment.

Hygienic gullies and accessories					
<Hygienic gullies and accessories>					
A	B	C	D	E	F
n	Description	Articlenumber	GTIN	Weight	Technical information
1	ACO CONE DE RECUPERATION 168X168 E25 BP25 / INOX 304 PASSIVE	415918	--	1.60 kg	<a href="https://www.aco.fr/">https://www.aco.fr/</a>
ACO cone H200: 1					
1	ACO CONE DE RECUPERATION / INOX 304/ POUR GRILLE / ELECTROPOLIE AVEC VERROUILLAGE ET PANIER	415821	--	3.00 kg	<a href="https://www.aco.fr/">https://www.aco.fr/</a>
ACO cone H250: 1					
1	ACO KIT COUPE FEU / ISOLANT THERMIQUE AVEC CLOCHE ET / SUPPORT CLOCHE / POUR SIPHON 157-110	416933	--	3.50 kg	<a href="https://www.aco.fr/">https://www.aco.fr/</a>
ACO Fire protection kit: 1					
1	ACO Réhausse inox - pour siphon corps diamètre 157 / Avec platine de diamètre 358 mm	408206	8590830107700	1.90 kg	<a href="https://www.aco.fr/">https://www.aco.fr/</a>
ACO raising pieces hygienic gully : 1					
1	ACO CANIVEAU ESKIS INOX COMPLET H-FIRST / CAILLEBOTIS 400X800 / HORIZ BOUT 157 DN110 / TEDESC / PLATINE	300315	--	19.20 kg	<a href="https://www.aco.fr/">https://www.aco.fr/</a>
1	ACO CANIVEAU ESKIS INOX COMPLET H-FIRST / CAILLEBOTIS 500X1000 / HORIZ BOUT 157 DN110 / TEDESC / PLATIN	300316	--	32.30 kg	<a href="https://www.aco.fr/">https://www.aco.fr/</a>
1	ACO CANIVEAU ESKIS INOX COMPLET H-FIRST / CAILLEBOTIS 300X1000 / HORIZ BOUT 157 DN110 / TEDESC / PLATIN	300318	--	18.00 kg	<a href="https://www.aco.fr/">https://www.aco.fr/</a>
1	ACO CANIVEAU ESKIS INOX COMPLET H-FIRST / CAILLEBOTIS 300X600 / VERTI BOUT 157 DN110 / TEDESC / PLATINE	304384	--	9.60 kg	<a href="https://www.aco.fr/">https://www.aco.fr/</a>
1	ACO CANIVEAU ESKIS INOX COMPLET H-FIRST / CAILLEBOTIS 400X400 / HORIZ 157 DN110 / TEDESC / PLATINE	304385	--	11.50 kg	<a href="https://www.aco.fr/">https://www.aco.fr/</a>
1	ACO CANIVEAU ESKIS INOX COMPLET H-FIRST / CAILLEBOTIS 400X800 / HORIZ 157 DN110 / TEDESC / PLATINE	304386	--	13.90 kg	<a href="https://www.aco.fr/">https://www.aco.fr/</a>
1	ACO CANIVEAU ESKIS INOX COMPLET H-FIRST / CAILLEBOTIS 500X500 / HORIZ 157 DN110 / TEDESC / PLATINE	304387	--	13.30 kg	<a href="https://www.aco.fr/">https://www.aco.fr/</a>
1	ACO CANIVEAU ESKIS INOX COMPLET H-FIRST / CAILLEBOTIS 500X1000 / HORIZ 157 DN110 / TEDESC / PLATINE	304388	--	18.00 kg	<a href="https://www.aco.fr/">https://www.aco.fr/</a>
1	ACO CANIVEAU ESKIS INOX COMPLET H-FIRST / CAILLEBOTIS 300X1000 / HORIZ 157 DN110 / TEDESC / PLATINE	304391	--	12.80 kg	<a href="https://www.aco.fr/">https://www.aco.fr/</a>
1	ACO SIPHON ESKIS INOX COMPLET H-FIRST / CAILLEBOTIS 200X200 / VERTI 142 DN75 / TEDESCOPIQUE / PLATINE	304392	--	3.50 kg	<a href="https://www.aco.fr/">https://www.aco.fr/</a>
1	ACO SIPHON ESKIS INOX COMPLET H-FIRST / CAILLEBOTIS 250X250 / VERTI 157 157 DN110 / TEDESC / PLATINE	304394	--	7.10 kg	<a href="https://www.aco.fr/">https://www.aco.fr/</a>
1	ACO SIPHON ESKIS INOX COMPLET H-FIRST / CAILLEBOTIS 300X300 / HORIZONTALE DN110 / TEDESC 157 / PLATINE	304397	--	7.60 kg	<a href="https://www.aco.fr/">https://www.aco.fr/</a>
1	ACO SIPHON ESKIS INOX COMPLET H-FIRST / CAILLEBOTIS DP 200X200 / HORIZONTALE 142 DN110 / TEDESC / PLATI	306705	--	6.50 kg	<a href="https://www.aco.fr/">https://www.aco.fr/</a>
ACO telescopic Eskis hvaoenic outlv : 13					