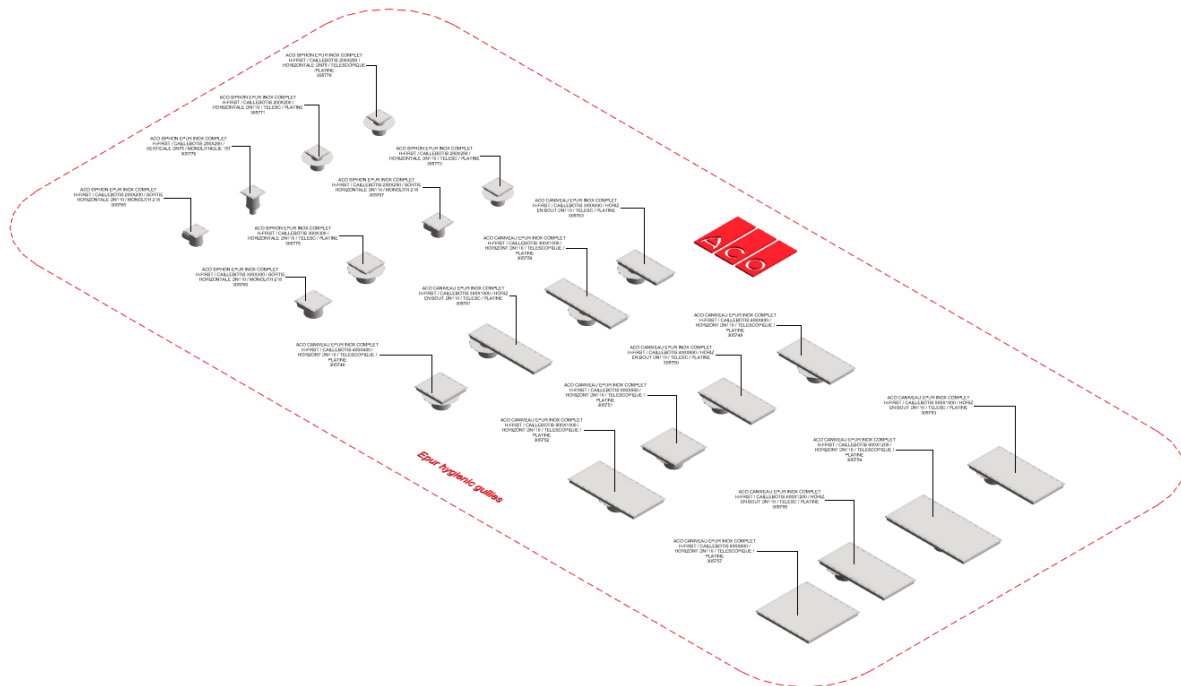


ACO Epur Hygiene first

User Guide for Autodesk Revit files



Introduction and overview:

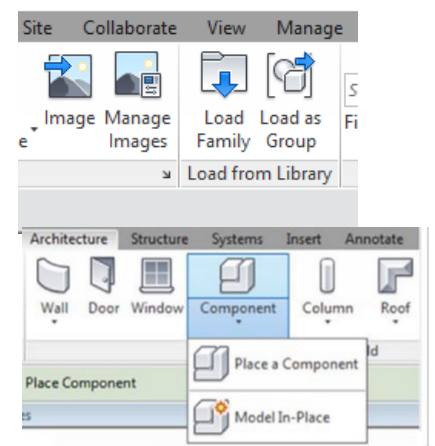
1. There are one family in the model incorporating Epur gully and associate accessories.
2. Families are assigned to Omni class 23.70.50.21.24: wastewater drains.
3. User can select each family from the type of selector in the project environment.

File characteristics and contents:

1. File is under 4.5 MB and designed to be user friendly.
2. File is tagged with manufacture's name, specification codes and other relevant information.
3. Bill of materials (schedules) can also be accessed from the project environment.

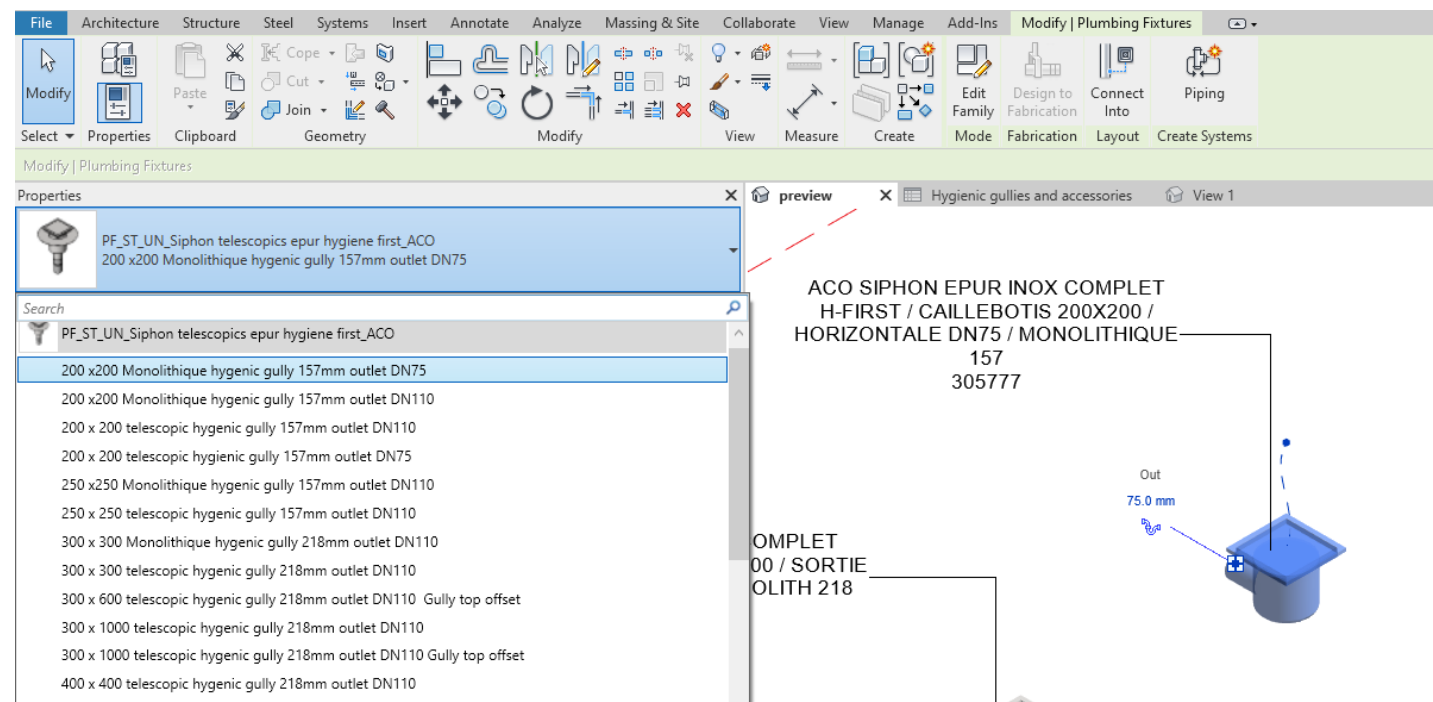
Loading ACO Epur hygiene first into the project:

1. Download the PF_ST_UN_Siphon telescopic Epur hygiene first .rfa file and save it to a suitable location
2. Load the families into the project file.
3. Navigate to the "Insert" icon on the Revit ribbon and click "Load Family."
4. The file can now be placed into your project. Navigate to the "Architecture/Component" icons on the Revit ribbon and click "Place a Component."

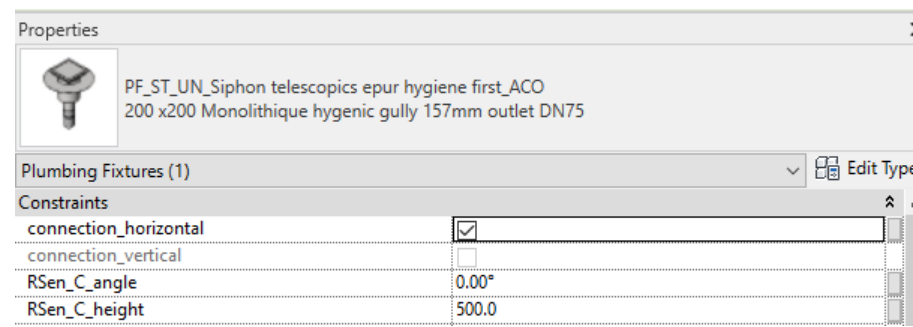


Placing of families

1. Click on the model – At properties tool bar, it will display family name as PF_ST_UN_Siphon telescopic epur hygiene first and family types are 200 x 200, 300 x 300 etc.
User end can select any type range of product from dropdown menu.



2. Selection of outlet position:
- Provided tick option for selecting the horizontal_connection and vertical_connection.
 - In horizontal position, user has possibility to rotate the outlet 360° in entering the value in RSen_C_angle.



3. Gully height adjustment: User has option to adjust the gully height by entering the value between H_min to H_max in RSen_C_height dialog box.

| | |
|---------------|------|
| RSen_C_height | 55.0 |
| H_calculated | 55.0 |
| H_min | 42.0 |
| H_max | 74.0 |

4. Selection of Riser piece: Provided tick option for selecting raising piece, once raising_piece is selected then user as to decide to select with flange or without flange by selecting tick option.

| | |
|------------------------------|-------------------------------------|
| raising_piece_selection | <input type="checkbox"/> |
| raising_piece_with_flange | <input type="checkbox"/> |
| raising_piece_without_flange | <input checked="" type="checkbox"/> |

5. Selection of accessories: Provided tick option for selecting related accessories like, PVC collar, cone bucket, protection kit for outlet and fire protection kit.

| | |
|-----------------------|-------------------------------------|
| collar_selection | <input type="checkbox"/> |
| DN75_collar_outlet | <input type="checkbox"/> |
| DN110_collar_outlet | <input checked="" type="checkbox"/> |
| cone_bucket_selection | <input type="checkbox"/> |
| protection_kit | <input type="checkbox"/> |
| fire_protection_kit | <input type="checkbox"/> |

6. Selection of Fire Protection Kit: Provided tick option for selecting fire protection kit only if the vertical outlet selected. If horizontal outlet is selected by default, it will show warning alert.

| | | | |
|--|---|---|---|
| Default Elevation | 0.0 | = | |
| connection_horizontal (default) | <input checked="" type="checkbox"/> | = | |
| connection_vertical (default) | <input type="checkbox"/> | = | not(connection_horizontal) |
| RSen_C_angle (default) | 0.00° | = | |
| RSen_C_height (default) | 0.0 | = | |
| H_calculated (default) | 42.0 | = | if(or(RSen_C_height < H_min, RSen_C_height = H_min), H_min, if(and(RSen_C_height > H_min, RSen_C_height < H_max), RSen_C, |
| H_min (default) | 42.0 | = | if(raising_piece_selection, raising_piece_H_min, size_lookup(lookup_table_name, "Hmin", 0 mm, region_index, material_index, fla |
| H_max (default) | 63.0 | = | if(raising_piece_selection, raising_piece_H_max, size_lookup(lookup_table_name, "Hmax", 0 mm, region_index, material_index, fla |
| raising_piece_selection (default) | <input type="checkbox"/> | = | |
| raising_piece_with_flange (default) | <input type="checkbox"/> | = | |
| raising_piece_without_flange (default) | <input checked="" type="checkbox"/> | = | not(raising_piece_with_flange) |
| collar_selection (default) | <input checked="" type="checkbox"/> | = | |
| DN75_collar_outlet (default) | <input checked="" type="checkbox"/> | = | |
| DN110_collar_outlet (default) | <input type="checkbox"/> | = | not(DN75_collar_outlet) |
| cone_bucket_selection (default) | <input type="checkbox"/> | = | |
| protection_kit (default) | <input type="checkbox"/> | = | |
| fire_protection_kit (default) | <input checked="" type="checkbox"/> | = | |
| WARNING (default) | fire protection kit not available for horizontal outlet | = | if(and(fire_protection_kit, connection_horizontal), "fire protection kit not available for horizontal outlet", "--") |

Material Library:

The ACO Epur Hygiene first files contain materials that are already pre-loaded into the components. When loading the ACO Epur files into your project the pre-loaded materials will automatically transfer through.

Schedules and quantities:

Information such as article number, GTIN data, weight, installation guidelines within the parameters is stored as “shared Parameters” so can easily appear when creating a schedule and quantities in the project environment.



<Hygienic gullies and accessories>

| A | B | C | D | E | F |
|---------------------------------------|--|---------------|---------------|----------|---|
| n | Description | Articlenumber | GTIN | Weight | Technical information |
| 4 | ACO CONE DE RECUPERATION 168X168 E25 BP25 / INOX 304 PASSIVE | 415918 | -- | 1.60 kg | https://www.aco.fr/ |
| ACO cone H200: 4 | | | | | |
| 4 | ACO KIT COUPE FEU / ISOLANT THERMIQUE AVEC CLOCHE ET / SUPPORT CLOCHE / POUR SIPHON 157-75 | 416932 | -- | 3.60 kg | https://www.aco.fr/ |
| ACO Fire protection kit: 4 | | | | | |
| 3 | ACO SYSTEME DE PROTECTION DE CANALISATION ACO PROTEC / INOX / POUR SORTIE DN75 | 304371 | -- | 1.10 kg | https://www.aco.fr/ |
| 1 | ACO SYSTEME DE PROTECTION DE CANALISATION ACO PROTEC / INOX 304 - POUR BS DIAMETRE 157 - HORIZONTAL | 307634 | -- | 0.37 kg | https://www.aco.fr/ |
| ACO Pipe protection system: 4 | | | | | |
| 4 | ACO RACCORD DE LIAISON / INOX / DN75 VERS PVC DN100 / POUR COLLAGE PVC | 304313 | -- | 0.04 kg | https://www.aco.fr/ |
| ACO PVC collar: 4 | | | | | |
| 4 | 408206 - Réhausse inox - pour siphon corps diamètre 157 / Avec platine de diamètre 358 mm | 408206 | 8590830107700 | 1.90 kg | https://www.aco.fr/ |
| ACO raising pieces hygienic gully : 4 | | | | | |
| 1 | ACO CANIVEAU EPUR INOX COMPLET H-FIRST / CAILLEBOTIS 400X400 / HORIZONTAL DN110 / TELESCOPIQUE / PLATINE | 305748 | -- | 12.70 kg | https://www.aco.fr/ |
| 1 | ACO CANIVEAU EPUR INOX COMPLET H-FIRST / CAILLEBOTIS 400X800 / HORIZONTAL DN110 / TELESCOPIQUE / PLATINE | 305749 | -- | 19.00 kg | https://www.aco.fr/ |
| 1 | ACO CANIVEAU EPUR INOX COMPLET H-FIRST / CAILLEBOTIS 400X800 / HORIZ EN BOUT DN110 / TEDESCOPIQUE / PLATINE | 305750 | -- | 19.60 kg | https://www.aco.fr/ |
| 1 | ACO CANIVEAU EPUR INOX COMPLET H-FIRST / CAILLEBOTIS 500X500 / HORIZONTAL DN110 / TELESCOPIQUE / PLATINE | 305751 | -- | 16.60 kg | https://www.aco.fr/ |
| 1 | ACO CANIVEAU EPUR INOX COMPLET H-FIRST / CAILLEBOTIS 500X1000 / HORIZONTAL DN110 / TELESCOPIQUE / PLATINE | 305752 | -- | 26.50 kg | https://www.aco.fr/ |
| 1 | ACO CANIVEAU EPUR INOX COMPLET H-FIRST / CAILLEBOTIS 500X1000 / HORIZ EN BOUT DN110 / TEDESCOPIQUE / PLATINE | 305753 | -- | 26.50 kg | https://www.aco.fr/ |
| 1 | ACO CANIVEAU EPUR INOX COMPLET H-FIRST / CAILLEBOTIS 600X1200 / HORIZONTAL DN110 / TELESCOPIQUE / PLATINE | 305754 | -- | 35.70 kg | https://www.aco.fr/ |
| 1 | ACO CANIVEAU EPUR INOX COMPLET H-FIRST / CAILLEBOTIS 600X1200 / HORIZ EN BOUT DN110 / TEDESCOPIQUE / PLATINE | 305755 | -- | 35.70 kg | https://www.aco.fr/ |
| 1 | ACO CANIVEAU EPUR INOX COMPLET H-FIRST / CAILLEBOTIS 800X800 / HORIZONTAL DN110 / TELESCOPIQUE / PLATINE | 305757 | -- | 39.60 kg | https://www.aco.fr/ |
| 1 | ACO CANIVEAU EPUR INOX COMPLET H-FIRST / CAILLEBOTIS 300X1000 / VERTICALE DN110 / TELESCOPIQUE / PLATINE | 305758 | -- | 19.90 kg | https://www.aco.fr/ |
| 1 | ACO CANIVEAU EPUR INOX COMPLET H-FIRST / CAILLEBOTIS 300X1000 / HORIZONTAL DN110 / TELESCOPIQUE / PLATINE | 305759 | -- | 18.20 kg | https://www.aco.fr/ |
| 1 | ACO CANIVEAU EPUR INOX COMPLET H-FIRST / CAILLEBOTIS 300X1000 / HORIZ EN BOUT DN110 / TEDESCOPIQUE / PLATINE | 305761 | -- | 18.20 kg | https://www.aco.fr/ |
| 1 | ACO CANIVEAU EPUR INOX COMPLET H-FIRST / CAILLEBOTIS 300X800 / HORIZ EN BOUT DN110 / TEDESCOPIQUE / PLATINE | 305763 | -- | 13.70 kg | https://www.aco.fr/ |
| 1 | ACO SIPHON EPUR INOX COMPLET H-FIRST / CAILLEBOTIS 200X200 / SORTIE HORIZONTALE DN110 / MONOLITH 218 | 305765 | -- | 4.10 kg | https://www.aco.fr/ |
| 1 | ACO SIPHON EPUR INOX COMPLET H-FIRST / CAILLEBOTIS 250X250 / SORTIE HORIZONTALE DN110 / MONOLITH 218 | 305767 | -- | 5.20 kg | https://www.aco.fr/ |
| 1 | ACO SIPHON EPUR INOX COMPLET H-FIRST / CAILLEBOTIS 300X300 / SORTIE HORIZONTALE DN110 / MONOLITH 218 | 305769 | -- | 7.10 kg | https://www.aco.fr/ |
| 1 | ACO SIPHON EPUR INOX COMPLET H-FIRST / CAILLEBOTIS 200X200 / VERTICALE DN110 / TELESCOPIQUE / PLATINE | 305770 | -- | 5.70 kg | https://www.aco.fr/ |
| 1 | ACO SIPHON EPUR INOX COMPLET H-FIRST / CAILLEBOTIS 200X200 / HORIZONTALE DN110 / TEDESCOPIQUE / PLATINE | 305771 | -- | 5.60 kg | https://www.aco.fr/ |
| 1 | ACO SIPHON EPUR INOX COMPLET H-FIRST / CAILLEBOTIS 250X250 / HORIZONTALE DN110 / TEDESCOPIQUE / PLATINE | 305773 | -- | 6.60 kg | https://www.aco.fr/ |
| 1 | ACO SIPHON EPUR INOX COMPLET H-FIRST / CAILLEBOTIS 300X300 / HORIZONTALE DN110 / TEDESCOPIQUE / PLATINE | 305775 | -- | 8.90 kg | https://www.aco.fr/ |
| 1 | ACO SIPHON EPUR INOX COMPLET H-FIRST / CAILLEBOTIS 200X200 / HORIZONTALE DN75 / MONOLITHIQUE 157 | 305777 | -- | 4.10 kg | https://www.aco.fr/ |
| 3 | ACO SIPHON EPUR INOX COMPLET H-FIRST / CAILLEBOTIS 200X200 / VERTICALE DN75 / TELESCOPIQUE / PLATINE | 305778 | -- | 5.70 kg | https://www.aco.fr/ |
| 1 | ACO SIPHON EPUR INOX COMPLET H-FIRST / CAILLEBOTIS 200X200 / HORIZONTALE DN75 / TELESCOPIQUE / PLATINE | 305779 | -- | 5.50 kg | https://www.aco.fr/ |